

EAST 
TENNESSEE

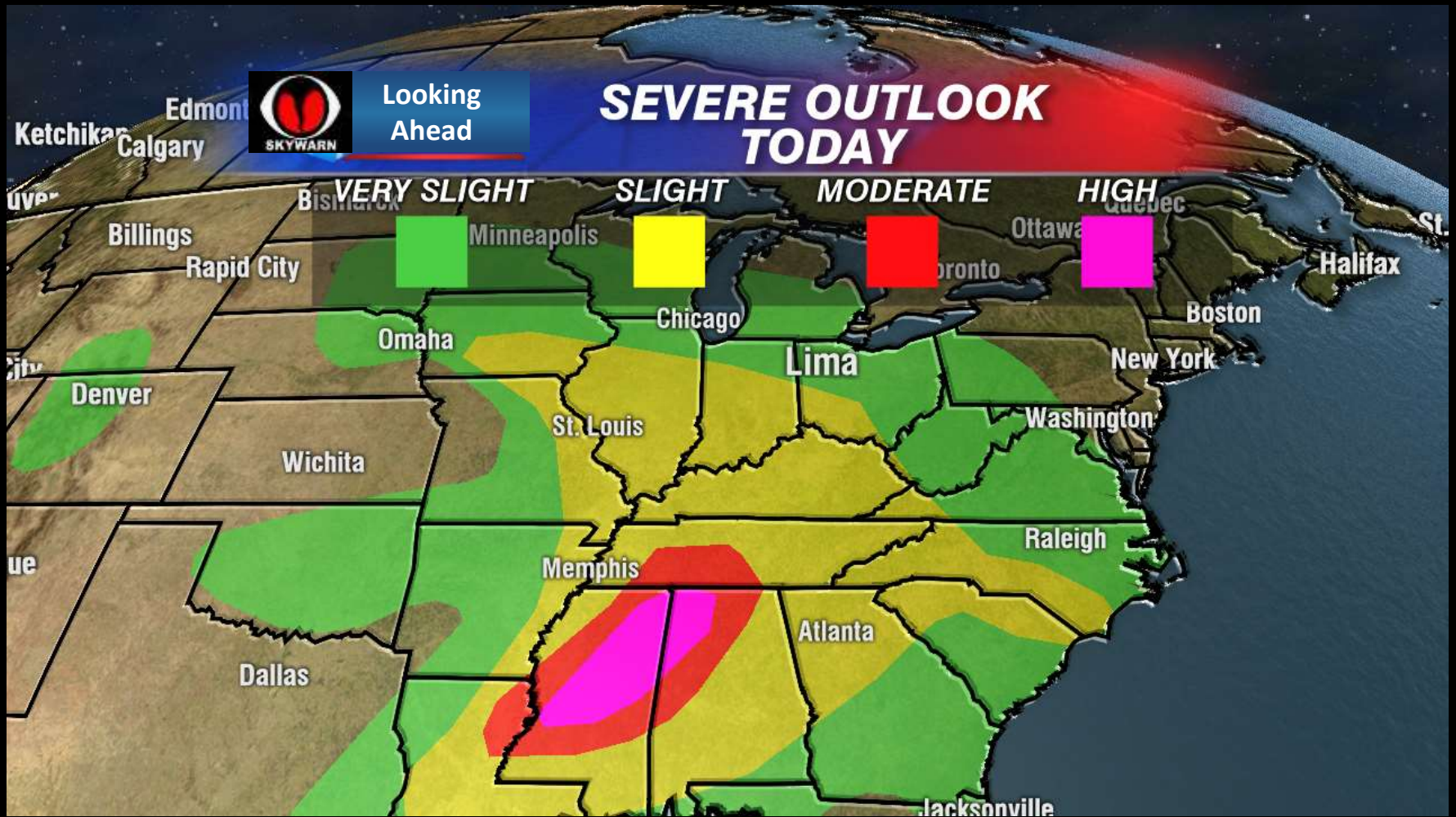
District III

Rhea, Meigs, McMinn, Monroe, Bradley, Polk Counties



Severe Weather Resources

Forewarned is Forearmed



Knowledge in advance enables one to be prepared

Be Ready



Don't let severe weather surprise you: **Stay Informed**

- Know where to get hazardous weather outlooks
- Frequently check weather forecasts for possible hazardous weather conditions
- Use a weather alert monitor (weather alert radios, cell-phone apps, etc.)

Develop a severe weather: **Personal Action Plan**



FEMA

- Make a plan to keep yourself and family safe during hazardous weather
- Decide on the role you want to play during severe weather events
- Ensure you have a means of staying informed of changing weather conditions
- Have a "Go-Bag" with all necessary radio, food, water and rain suit ready

Keep critical knowledge & operation skills sharp: **Practice**

- Review reportable criteria & frequently view severe weather pictures
- Frequently review the responsibilities of the role you have chosen to play
- Regularly participate in training and practice events





Monitoring Severe Weather Risks




Skywarn Spotter Resources

Keeping Ahead of the Weather



EAST TENNESSEE District III
Rhea, Meigs, McMinn, Monroe, Bradley, Polk Counties

Resource Quick Reference

Morristown National Weather Service Home Page:  NATIONAL WEATHER SERVICE


Weather Outlook: [National Outlook Maps](#)

Hazardous Weather Outlook: [Today](#) [Tomorrow](#) [Day After Tomorrow](#) [Text Version](#) [SPC](#)

Active Storms & Watches / Warnings

Current Watch / Warning: <https://weather.in/embot/>, enter "Morristown" in "Available Rooms."

Radar Storm Tracking Resources: The Big View [NWS National MDS&C](#)

 [Morristown NWS Radar](#)  [Huntsville NWS Radar](#)  [Weather Underground Radar](#)

What to report - Reporting Criteria:

- Hail
- Strong Winds (58MPH or greater)
- Rainfall of 1" or more per hour
- Flooding
- Wind Damage
- Wall or funnel clouds (rotating)
- Tornado (on ground / debris cloud)

Things to include in all your SKYWARN reports:

- WHO: "Trained SKYWARN Spotter" (name plus callsign if amateur radio operator)
- WHERE: Report your county and state, and position relative to a known town/landmark ("Seven miles west of Galax"). If the event is not occurring where you are, report your position relative to the event/storm ("Looking three miles north of my location"). If applicable, report the movement and speed of the event being observed.
- WHAT: Describe the event/storm (see reporting criteria above)
- WHEN: The exact time of the event/storm, duration of the event, and if the event is still occurring

Take pictures if possible and send to MRX by Facebook or email


Reporting to Morristown NWS:

Trained Spotters – Communicate through a local Skywarn Net if possible if unable report by [web-form](#)

Skywarn Net Control Station – Report by [web-form](#) and follow-up by Radio, last resort 800-697-0075

Monitor [Local Storm Reports](#) [With Map Location](#) (Monitoring local reports can enhance personal safety by forewarn of approaching dangerous conditions and the need to seek shelter. It also allows Skywarn NCS the ability to seek Spotters in contact with the net for confirmation reports)

Eastern Tennessee Skywarn

 [Webpage](#)  [Amateur Radio Trained Spotters & Amateur Radio](#)

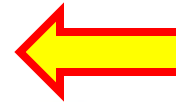


Resource Quick Reference

Morristown National Weather Service Home Page:   NATIONAL WEATHER SERVICE

Weather Outlook: [National Outlook Maps](#)

Hazardous Weather Outlook: [Today](#) [Tomorrow](#) [Day After Tomorrow](#) [Text Version](#) [SPC](#)



Active Storms & Watches / Warnings

Current Watch / Warning: <https://weather.im/iembot/> enter "Morristown" in "Available Rooms:"

Radar Storm Tracking Resources: The Big View [NWS National MOSAIC](#)



[Morristown NWS Radar](#)



[Huntsville NWS Radar](#)



[Weather Underground Radar](#)

What to report - Reporting Criteria:

- Hail
- Strong Winds (58MPH or greater)
- Rainfall of 1" or more per hour
- Flooding
- Wind Damage
- Wall or funnel clouds (rotating)
- Tornado (on ground / debris cloud)

Things to Include in all your **SKYWARN** reports:

The top section of the "Resources Quick Reference" includes several links to help you stay informed about the current as well as future weather conditions forecast for our area. Each hyperlink will take you quickly to a resource to help you stay ahead of developing weather conditions and be forewarned of severe weather potentials.



Local forecast by
City, ST or ZIP code

[Location Help](#)

MY FORECAST
Knoxville TN



Fair

77°F

25°C [Get Detailed Info](#)

Tonight



Clear

Low: 53°F

Friday



Sunny

High: 81°F

[change location](#)

News Headlines

- [Spotter Training Class Schedule](#)

NWS Morristown

[Weather.gov](#) > Morristown, TN

Morristown, TN

Weather Forecast Office

[Current Hazards](#) [Current Conditions](#) [Radar](#) [Forecasts](#) [Rivers and Lakes](#) [Climate and Past Weather](#) [Local Programs](#)

Today

Smoky Mtn Observations

Daily Climate

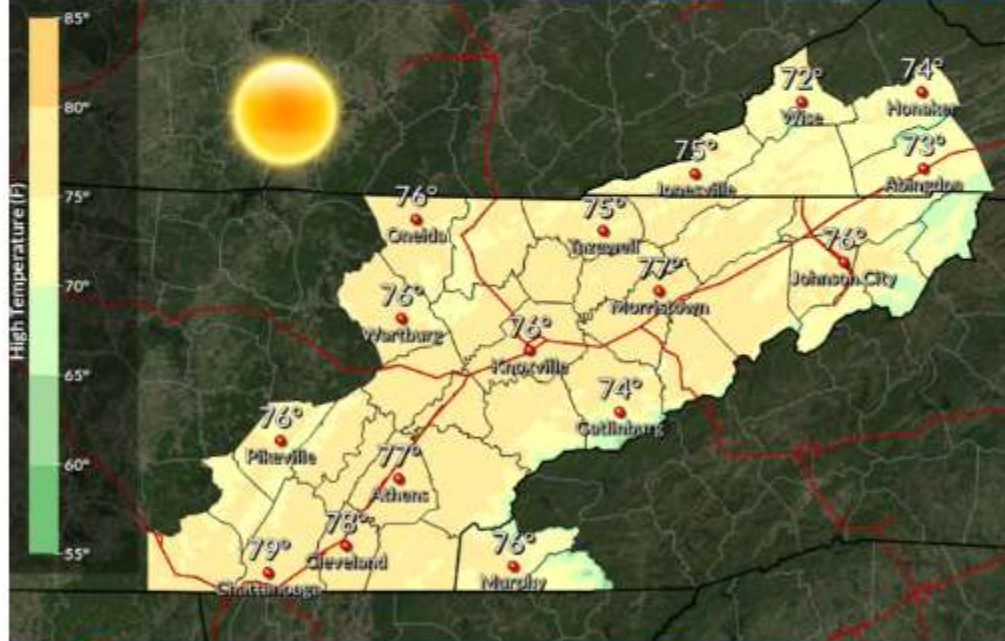
Warm and Breezy Today

High temperatures in the 70s for most locations

Weather Forecast Office

Morristown, TN

Issued Apr 12, 2018 4:28 AM EDT



[Facebook](#) [Twitter](#) [YouTube](#) NWSMorristown

weather.gov/mrx

It will be mostly sunny and warm today with breezy winds at times. High temperatures should be in the 70s for most locations.

[Hide Caption](#)



Local forecast by "City, St" or ZIP code

Enter location...

[Location Help](#)

News Headlines

- [Spotter Training Class Schedule](#)
- [Service Change Notification: Information on the April 6, 2018 Discontinuation of MRX Basin Lake Stages and Forecasts](#)
- [Winter Seasonal Climate](#)

Customize Your Weather.gov

City, ST

Enter Your City, ST or ZIP Code

Remember Me

[Privacy Policy](#)

NWS Morristown

[Weather.gov](#) > Morristown, TN

Morristown, TN
Weather Forecast Office

- [Current Hazards](#) [Current Conditions](#) [Radar](#) [Forecasts](#) [Rivers and Lakes](#) [Climate and Past Weather](#) [Local Programs](#)

Severe Weather

Outlooks

Submit a Storm Report

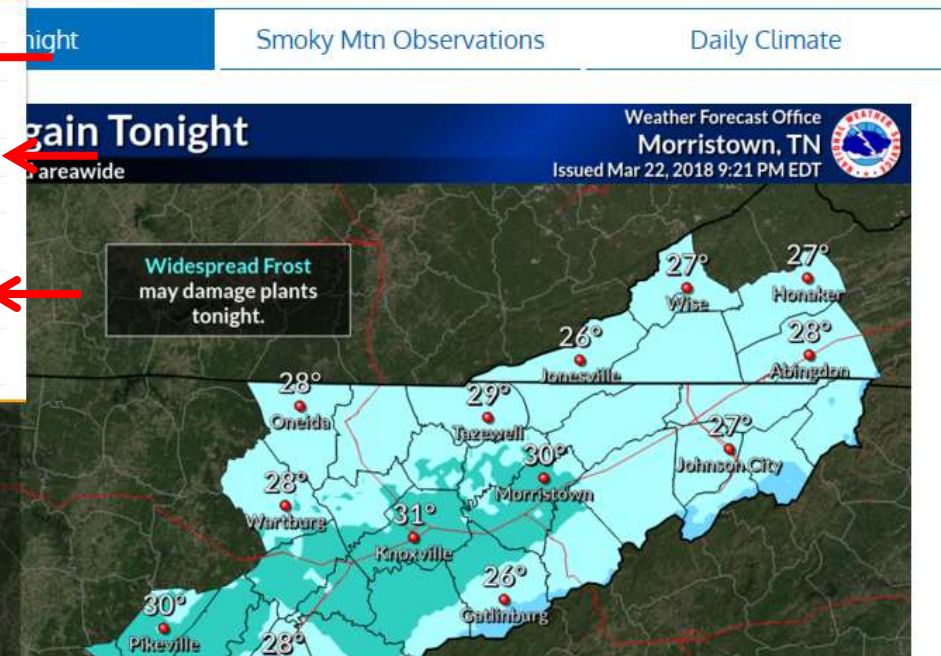
Local Storm Report

National Hazards

Hazardous Weather Outlooks

Local Hazardous Weather Outlook

Advisory & Warning Criteria



When severe weather threatens you need reliable information to assist you as a trained Skywarn Spotter. While in your training, you were shown many of these resources which can be accessed through the Morristown National Weather Service field office website <https://www.weather.gov/mrx/>, each of these resources and others have been captured in the "Quick Reference" for easier use.



Resource Quick Reference

Morristown National Weather Service Home Page: [NATIONAL WEATHER SERVICE](#)

Weather Outlook: [National Outlook](#)

Hazardous Weather Outlook: [Today](#) [Tomorrow](#) [Day After Tomorrow](#) [Text Version](#) [SPC](#)

Active Storms & Watches / Warnings

Current Watch / Warning: <https://weather.im/iembot/> enter "Morristown" in "Available Rooms."

Radar Storm Tracking Resources: The Big View [NWS National MOSAIC](#)



[Morristown NWS Radar](#)



[Huntsville NWS Radar](#)



[Weather Underground Radar](#)

What to report - Reporting Criteria:

- Hail
- Strong Winds (58MPH or greater)
- Rainfall of 1" or more per hour
- Flooding
- Wind Damage
- Wall or funnel clouds (rotating)
- Tornado (on ground / debris cloud)

Things to Include in all your SKYWARN reports:

- WHO: "Trained SKYWARN Spotter" (name plus callsign if amateur radio operator)

The top section of the "Resources Quick Reference" includes several links to help you stay informed about the current as well as future weather conditions forecast for our area. Each hyperlink will take you quickly to a resource to help you stay ahead of developing weather conditions and be forewarned of severe weather potentials.



OUTLOOKS

[Local Hazardous Weather Outlook](#)



Severe Weather

Day 1



Mesoscale Discussion



Day 2



SPC Activity Chart



Day 3



SPC Mesoanalysis Chart



Showing a 1 hour radar loop, the current Day 1 convective outlook, and all active watches.

Click on the image for a detailed look at severe weather parameters for various sectors across the county.

Rainfall

[Local Hydrologic Outlook](#)

We're most interested in the convective outlook at the top of the page. This gives a National view of hazardous weather risks for the next three days. A text version of our local area risk can be seen by clicking on the "Local Hazardous Weather Outlook" link near the top of the page.



OUTLOOKS

[Local Hazardous Weather Outlook](#)

Severe Weather



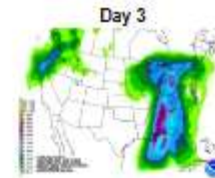
Showing a 1 hour radar loop, the current Day 1 convective outlook, and all active watches. Click on the image for a detailed look at severe weather parameters for various sectors across the county.

Rainfall

[Local Hydrologic Outlook](#)

[Rainfall Discussion Days 1-3](#)

[Excessive Rainfall Discussion](#)



Below the Convective forecasts on this page is a visual representation of the rainfall amounts which can be expected with each storm. This could be valuable information to anticipate possible flooding.



Local forecast by "City, St" or "ZIP" City, St Go

Find us on Facebook SPC on Facebook

@NWS5PC

NCEP Quarterly Newsletter

- Home (Classic)
- SPC Products
- All SPC Forecasts
- Current Watches
- Meso. Discussions
- Conv. Outlooks
- Tstm. Outlooks
- Fire Wx Outlooks
- RSS Feeds
- E-Mail Alerts
- Weather Information
- Storm Reports
- Storm Reports Dev.
- NWS Hazards Map
- National RADAR
- Product Archive
- NOAA Weather Radio
- Research
- Non-op. Products
- Forecast Tools
- Svr. Tstm. Events
- SPC Publications
- SPC-NSSL HWT
- Education & Outreach
- About the SPC
- SPC FAQ
- About Tornadoes
- About Derechos
- Video Lecture Series
- WCM Page
- Enh. Fujita Page
- Our History
- Public Tours
- Misc.
- Staff
- Contact Us
- SPC Feedback



Day 2 Outlook Day 4 - 8 Outlook > Apr 12, 2018 0730 UTC Day 3 Severe Thunderstorm Outlook

Updated: Thu Apr 12 07:27:29 UTC 2018 (Print Version | |)

Probabilistic to Categorical Outlook Conversion Table

Categorical Probabilistic Population Cities CWAs Interstates Counties ARTCC FEMA Regions



SPC DAY 3 CATEGORICAL OUTLOOK
 ISSUED: 0727Z 04/12/2018
 VALID: 14/1200Z-15/1200Z
 FORECASTER: GOSS
 NOAA/MYS Storm Prediction Center, Norman, Oklahoma

Categorical Outlook Legend:
 TSTM 1: MRGL 2: SLGT
 3: ENH 4: MDT 5: HIGH

Categorical Day3 0730Z Outlook

Day 3 Risk	Area (sq. mi.)	Area Pop.	Some Larger Population Centers in Risk Area
ENHANCED	64,185	6,107,884	New Orleans, LA...Birmingham, AL...Montgomery, AL...Mobile, AL...Metairie, LA...
SLIGHT	50,505	9,432,453	Nashville, TN...Baton Rouge, LA...Columbus, GA...Jackson, MS...Huntsville, AL...
MARGINAL	150,035	21,133,477	Indianapolis, IN...Atlanta, GA...Cincinnati, OH...Louisville, KY...Lexington-Fayette, KY...

Forecast Discussion

Forecast Discussion

SPC AC 120727

Day 3 Convective Outlook
NWS Storm Prediction Center Norman OK
0227 AM CDT Thu Apr 12 2018

Valid 141200Z - 151200Z

...THERE IS AN ENHANCED RISK OF SEVERE THUNDERSTORMS FROM CENTRAL ALABAMA SOUTHWARD TO EASTERN LOUISIANA...SOUTHEAST MISSISSIPPI...THE ALABAMA COAST...AND FLORIDA PANHANDLE...

...THERE IS A SLIGHT RISK OF SEVERE THUNDERSTORMS FROM THE MID SOUTH SOUTHWARD TO THE CENTRAL GULF COAST REGION...

...THERE IS A MARGINAL RISK OF SEVERE THUNDERSTORMS SURROUNDING THE SLIGHT AND ENHANCED RISKS...AND EXTENDING NORTH INTO THE OHIO VALLEY AREA...

...SUMMARY...
Strong to severe storms are expected across the Mid South and central Gulf Coast regions Saturday.

...Synopsis...
Continued slow eastward progression of the central U.S. upper low/trough is expected Saturday, with the trough acquiring a more neutral to perhaps slightly negative tilt with time. Meanwhile, ridging on either side of the trough will prevail over the East and the West, though the next/northeast Pacific upper trough will approach the Pacific Northwest by Sunday morning.

At the surface, an occluded low will shift gradually across the mid-Mississippi Valley and into the Midwest with time, while a trailing cold front sweeps across the Mid South and central Gulf Coast states through 15/12Z. A some of strong/severe storms is expected to accompany the advance of the surface boundary.

...Mid South/Tennessee Valley into the central Gulf Coast states...
Widespread showers and thunderstorms are forecast to be ongoing over western fringes of the outlook area Saturday morning. The associated cloud cover casts some uncertainty with respect to degree of warm-sector destabilization which will be possible downstream. Greatest CAPE will likely evolve from central Alabama south to the central Gulf Coast, as southwest flow aloft should carry thicker cloud debris across the Tennessee Valley region.

As the airmass destabilises, expect reintensification of storms near/ahead of the advancing front, with organisation aided by strong low- to mid-level flow likely to exceed 50 to 60 kt in the 850 to 500 mb layer over portions of the Alabama vicinity by late afternoon. While somewhat unidirectional/southerly flow should limit low-level shear to some degree, and roughly front-parallel flow and linear frontal forcing suggests linear storm mode, damaging winds can be expected with passage of the frontal storm band. Hail -- and a tornado or two -- will also be possible, particularly with southward extent. A gradual decrease in storm intensity/severe risk should commence later in the evening, as convection reaches the southern Appalachians and Florida Panhandle.

While the previous link presented the National Weather Services' summary of the hazardous weather forecasts, the next three links take you to the Storm Prediction Center's detailed pages for each day. There is a larger visual depiction of the day's forecast at the top with a more detailed text description of the anticipated hazardous weather directly underneath.

Understanding Severe Thunderstorm Risk Categories

THUNDERSTORMS (no label)	1 - MARGINAL (MRGL)	2 - SLIGHT (SLGT)	3 - ENHANCED (ENH)	4 - MODERATE (MDT)	5 - HIGH (HIGH)
No severe* thunderstorms expected	Isolated severe thunderstorms possible	Scattered severe storms possible	Numerous severe storms possible	Widespread severe storms likely	Widespread severe storms expected
Lightning/flooding threats exist with <u>all</u> thunderstorms	Limited in duration and/or coverage and/or intensity	Short-lived and/or not widespread, isolated intense storms possible	More persistent and/or widespread, a few intense	Long-lived, widespread and intense	Long-lived, very widespread and particularly intense
					
<ul style="list-style-type: none"> • Winds to 40 mph • Small hail 	<ul style="list-style-type: none"> • Winds 40-60 mph • Hail up to 1" • Low tornado risk 	<ul style="list-style-type: none"> • One or two tornadoes • Reports of strong winds/wind damage • Hail ~1", isolated 2" 	<ul style="list-style-type: none"> • A few tornadoes • Several reports of wind damage • Damaging hail, 1 - 2" 	<ul style="list-style-type: none"> • Strong tornadoes • Widespread wind damage • Destructive hail, 2" + 	<ul style="list-style-type: none"> • Tornado outbreak • Derecho

* NWS defines a severe thunderstorm as measured wind gusts to at least 58 mph, and/or hail to at least one inch in diameter, and/or a tornado. All thunderstorm categories imply lightning and the potential for flooding. Categories are also tied to the probability of a severe weather event within 25 miles of your location.



National Weather Service

www.spc.noaa.gov



To understand what the different colors on the maps mean you can refer to this chart (located on the left side of the page under the map). Understanding not only the probability but also the potential severity depicted on the maps is important to preparing for your role as a Skywarn Spotter.



Morristown, TN

Home Site Map News Organization Search for: NWS All NOAA

Local forecast by "City, St" or Zip Code

City, St

[XML](#) [RSS Feeds](#)

Warnings

Current
By State/County...
UV Alerts
more...

Observations

Radar
Satellite
Snow Cover
Surface Weather...
Observed Precip
more...

Forecasts

Local
Graphical
Aviation
Marine
Hurricanes
Severe Weather
Fire Weather
more...

Text Messages

By State
By Message Type
National

Forecast Models

Numerical Models
MOS Prod Statistical Model
GFS-LAMP Prod Statistical Model
more...

Climate

Past Weather
Predictions

Weather Safety

Weather Radio
Hazard Assmt...
StormReady
TsunamiReady

Hazardous Weather Outlook

Issued by NWS Knoxville/Tri Cities, TN

[Home](#) | [Current Version](#) | [Previous Version](#) | [Text Only](#) | [Print](#) | [Product List](#) | [Glossary On](#)

Versions: [1](#) [2](#) [3](#) [4](#) [5](#) [6](#) [7](#) [8](#) [9](#) [10](#) [11](#) [12](#) [13](#)

000

FLUS44 KMRX 121906

HWOMRX

Hazardous Weather Outlook

National Weather Service Morristown TN
306 PM EDT Thu Apr 12 2018

NCZ060-061-TN2012>018-035>047-067>074-081>087-098>102-VAZ001-002-005-006-008-131915-

Cherokee-Clay-Scott TN-Campbell-Claiborne-Hancock-Hawkins-Sullivan-Johnson-Morgan-Anderson-Union-Grainger-Hamblen-Northwest Cocke-Cocke Smoky Mountains-Northwest Greene-Southeast Greene-Washington TN-Unicoi-Northwest Carter-Southeast Carter-Roane-Loudon-Knox-Jefferson-NW Blount-Blount Smoky Mountains-North Sevier-Sevier Smoky Mountains-Sequatchie-Eleasoe-Rhea-Meigs-McMinn-Northwest Monroe-Southeast Monroe-Marion-Hamilton-Bradley-West Polk-East Polk-Lee-Wise-Scott-Russell-Washington-
306 PM EDT Thu Apr 12 2018 /206 PM CDT Thu Apr 12 2018/

This Hazardous Weather Outlook is for portions of Southwest North Carolina...East Tennessee and Southwest Virginia.

.DAY ONE...This Afternoon and Tonight

Low relative humidity values and significant winds are expected to lead to enhanced fire danger this afternoon, especially across Southwest Virginia.

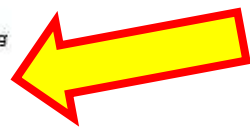
.DAYS TWO THROUGH SEVEN...Friday through Wednesday

Thunderstorms with heavy rainfall are expected Saturday night through Sunday ahead of a strong cold front. Localized flooding and strong wind gusts will be possible.

.SPOTTER INFORMATION STATEMENT...

Spotter activation may be needed Saturday night and Sunday.

\$\$



Clicking the next link, "Text", will take you to a text description of our local area hazardous weather forecast. Of particular Note is the "Spotter Information Statement" at the bottom of the statement.



Storm Prediction Center

N O A A / National Weather Service

An Enhanced Risk of Severe Thunderstorms for Fri (04/13)

Strong/severe storms are expected to develop Friday afternoon and continue into the overnight hours extending from Iowa and part of the middle Missouri Valley southward across the Arklatex region, and lower Mississippi Valley. All severe hazards are possible with very large hail and a few tornadoes, one or two of which could be strong, being the primary threats.

» For additional details, see the latest [Day 2 Convective Outlook](#):

» **Extremely critical** fire weather conditions are forecast today. See [details...](#)

» **Extremely critical** fire weather conditions are forecast on Fri (04/13). See [details...](#)

Overview | Conv. Outlook | Watches | MDs | Storm Reports | Mesosynopses | Fire | Hazards

SPC Activity Chart
20180412/2104

National Weather Service
Storm Prediction Center
Norman, Oklahoma

Hazard	Thu (04/12)	Fri (04/13)	Sat (04/14)	Sun (04/15)	Mon (04/16)	Tue (04/17)	Wed (04/18)	Thu (04/19)
Severe	Marginal	Enhanced	Enhanced	Severe	No Area	No Area	No Area	No Area
Fire	Extreme	Extreme	Critical	No Area	Critical	Critical	No Area	No Area

All Products | Watches | MDs | Outlooks | Fire

- [Thunderstorm Outlook](#)
- Issued: 04/12/2018 at 2020Z
- [Day 1 Convective Outlook](#)
- Categorical Risk: **Marginal**
- Issued: 04/12/2018 at 2000Z
- [Day 2 Fire Weather Outlook](#)
- Categorical Risk: **Extreme**
- Issued: 04/12/2018 at 1955Z
- [Day 2 Convective Outlook](#)
- Categorical Risk: **Enhanced**
- Issued: 04/12/2018 at 1750Z
- [Day 1 Fire Weather Outlook](#)
- Categorical Risk: **Extreme**
- Issued: 04/12/2018 at 1659Z
- [Day 4-8 Convective Outlook](#)
- Categorical Risk: **Severe**

Severe Weather Climatology (1982-2011)

Significant Hail Probabilities: 12 Apr

More severe weather climatology data [here](#).

2018 Tornado Watch Summary

Did You Know?

Understanding Severe Thunderstorm Risk Categories

National Weather Service

What's My Risk?

The last link, "SPC" will take you to the Storm Prediction Center and a "Big Picture" view of hazardous weather potentials. The colors on the map are indications of the probable severity of the weather in the shaded area. (Note color chart bottom right)



Local forecast by "City, St" or "ZIP"

City, St



NCEP Quarterly Newsletter

- Home (Classic)
- SPC Products
- All SPC Forecasts
- Current Watches
- Meso. Discussions
- Conv. Outlooks
- Tstm. Outlooks
- Fire Wx Outlooks
- RSS Feeds
- E-Mail Alerts
- Weather Information
- Storm Reports
- Storm Reports Dev.
- NWS Hazards Map
- National RADAR
- Product Archive
- NOAA Weather Radio

- Research
- Non-op. Products
- Forecast Tools
- Svr. Tstm. Events
- SPC Publications
- SPC-NSSL HWT
- Education & Outreach
- About the SPC
- SPC FAQ
- About Tornadoes
- About Derechos
- Video Lecture Series
- WCM Page
- Enh. Fujita Page
- Our History
- Public Tours

- Misc.
- Staff
- Contact Us
- SPC Feedback



Forecast Products

Current Weather Watches

This is the current graphic showing any severe thunderstorm and tornado watches which are in effect over the contiguous United States. Please read about the [purpose of our watches](#) for further information. Details on all valid watches may be found on our [Current Convective Watches](#) page.



Current Mesoscale Discussions

This is the current graphic showing any mesoscale discussions (MD's) which are in effect over the contiguous United States. Please read the description of the [purpose of our MD's](#) for further information. Details on all valid MD's may be found on our [Current Mesoscale Discussions](#) page.



Convective Outlooks

Today's Outlook

This is today's forecast for organized severe thunderstorms over the contiguous United States. Please read the [description of the risk categories](#) for further information. You may find the latest Day 1 Outlook available as well as all Outlooks issued today online.



Tomorrow's Outlook

This is tomorrow's forecast for organized severe thunderstorms over the contiguous United States. Please read the [description of the risk categories](#) for further information. The latest Day 2 Outlook is available as well as all Outlooks that have been issued today.



Day 3 Outlook

This is the day after tomorrow's (day 3) forecast for organized severe thunderstorms over the contiguous United States. Please read the [description of the risk categories](#) for further information. The latest Day 3 Outlook is available as well as all Outlooks that have been issued today.



Day 4-8 Outlook

This is the day 4-8 forecast for organized severe thunderstorms over the contiguous United States. The latest Day 4-8 Outlook is available as well as all Outlooks that have been issued today.



Note: A severe weather area depicted in the Day 4-8 period

Clicking on the large map will take you to a page that gives further detail to the various storm prediction information. Note that the first map shows current watches throughout the U.S. The second map provides information on "Mesoscale map" (**Mesoscale meteorology** is the study of [weather](#) systems smaller than [synoptic scale](#) systems). These are localized weather systems which influence conditions like thunderstorms, etc. And finally, the 8 day convective and thunderstorm outlook maps are provided incrementally by day.

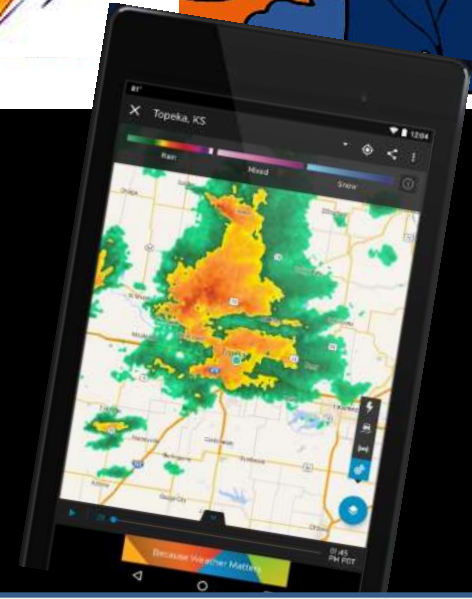


When Severe Weather Strikes

A dramatic photograph of a stormy night sky with multiple bright purple and white lightning bolts striking down from dark, heavy clouds. The foreground shows the dark silhouettes of trees and a horizon line.

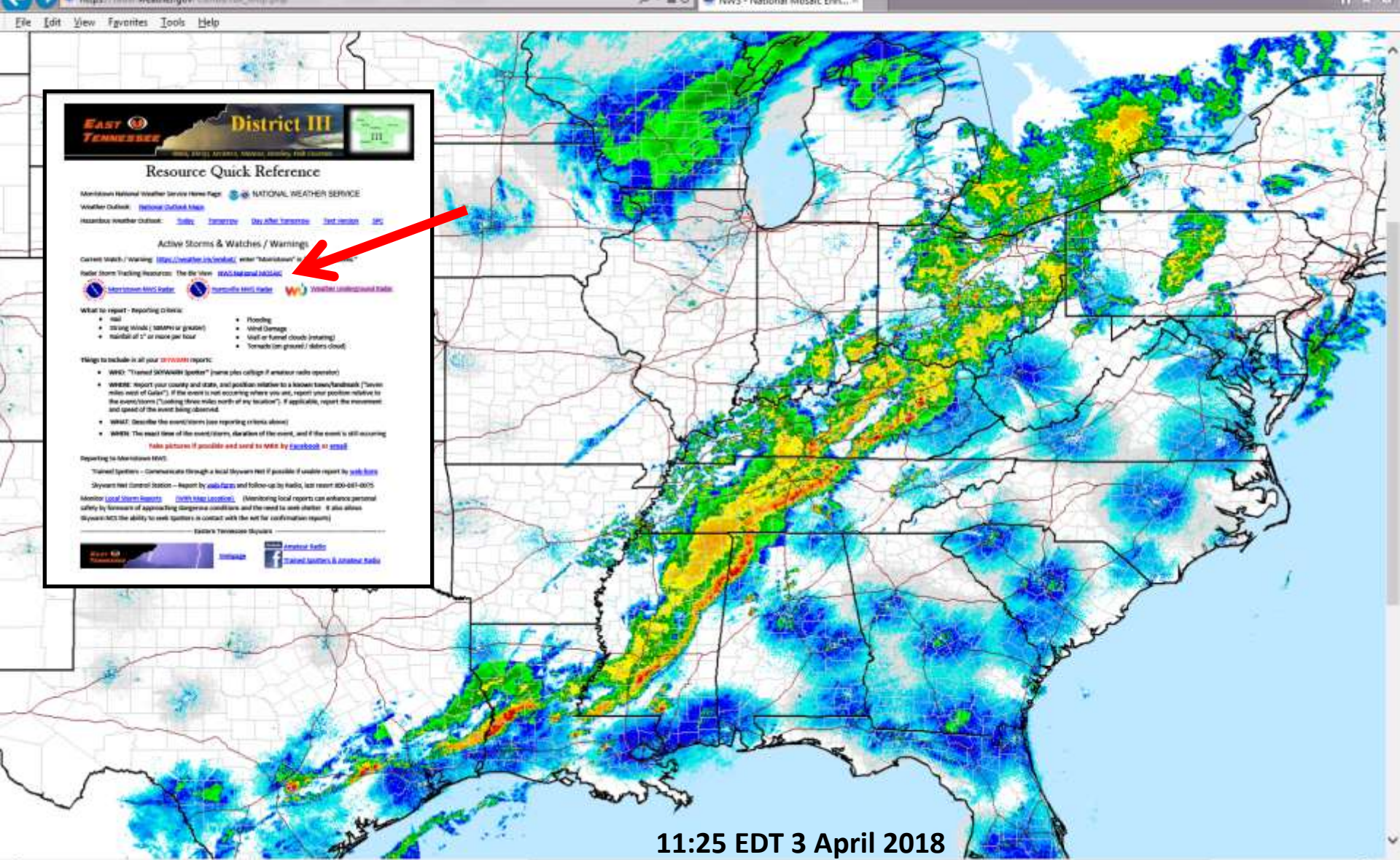
**SEVERE WEATHER
WARNING**

Skywarn Spotter Resources



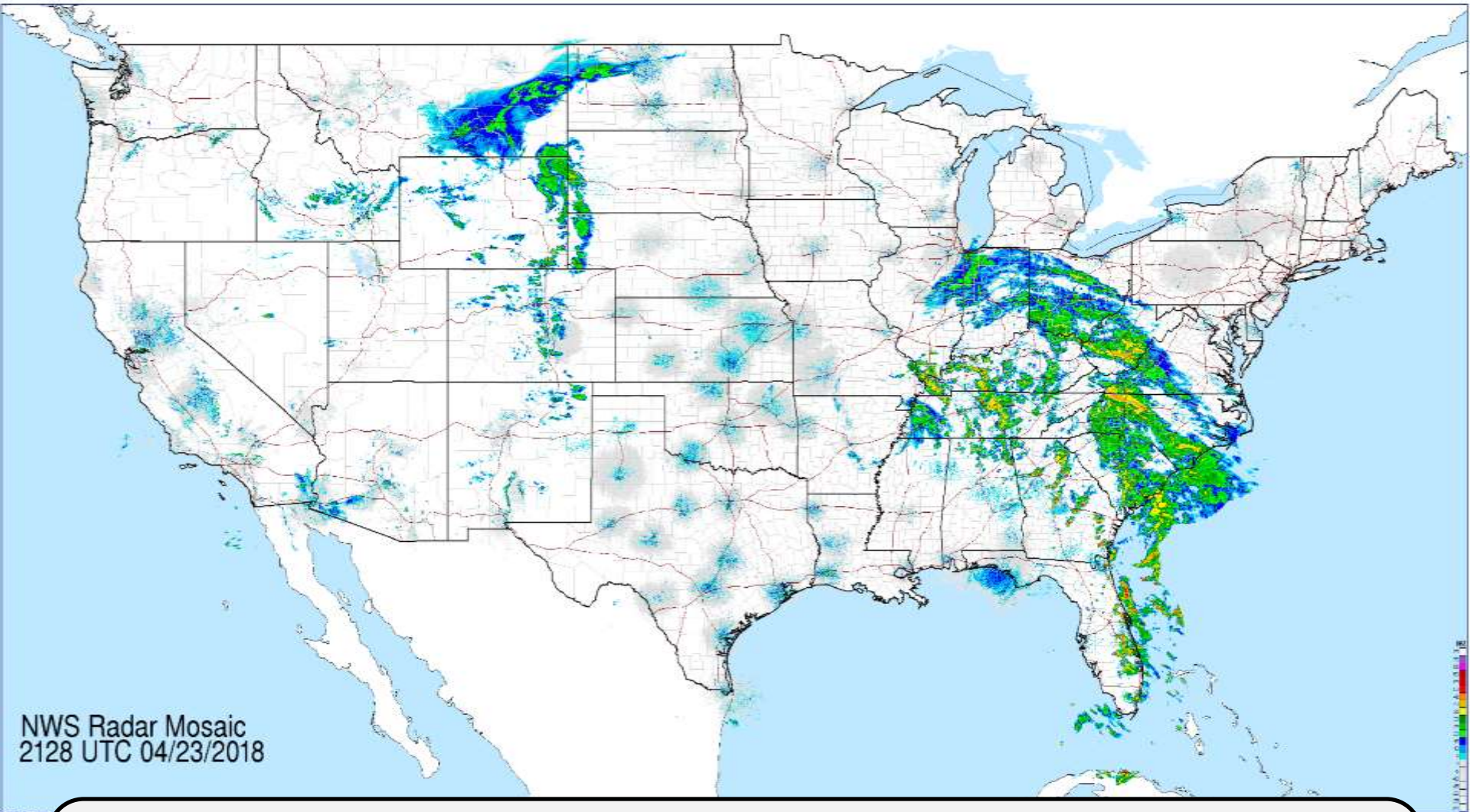
No Matter How You Are Alerted to Severe Weather

Whether you see it on a TV weather show, hear a Warning on a weather radio, are alerted of a Warning on your cell-phone, or have been following it through the NWS forecasts, you will want to track severe weather storms as they approach your area. The method you use until your area is affected is a matter of personal choice (TV, radio, phone-app, etc.), but you should stay vigilant.



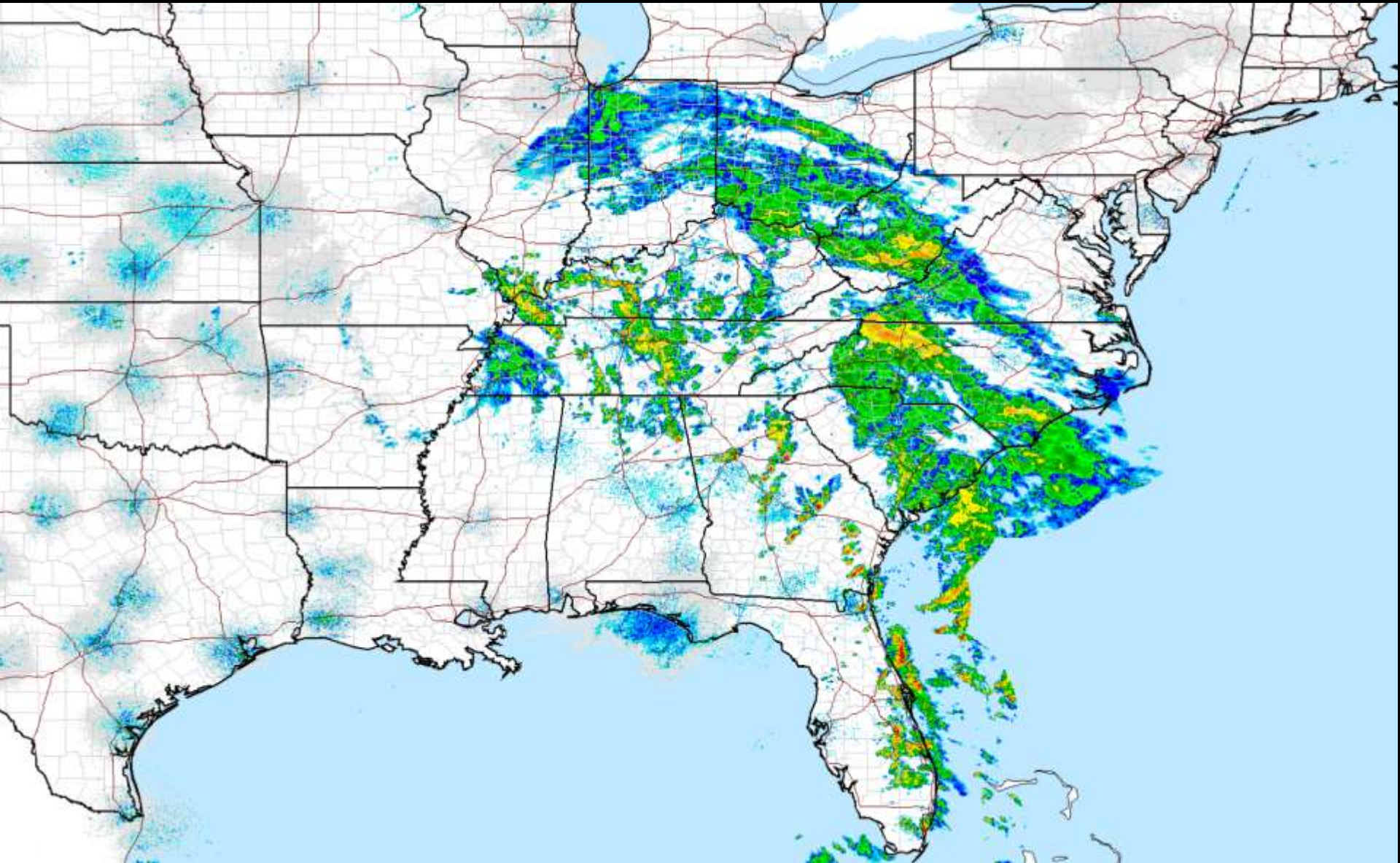
11:25 EDT 3 April 2018

My personal preference is National Weather Service's National Mosaic Doppler weather radar (in loop mode) [NWS National MOSAIC](#) [National Map](#)



NWS Radar Mosaic
2128 UTC 04/23/2018

THE BIG PICTURE - Storms are generally related to weather systems. It is often useful to get a “big picture” view of how the systems are related to the country’s geography. This Doppler Radar mosaic can be viewed as either a still shot or looped motion. Using the looped mode illustrates storm movement and other important details.



You can zoom into the radar image for greater detail or even click on a map location and it will take you to the radar covering that area of the country for a full radar analysis of the weather you are interested in.

When Severe Weather Gets Close





As Severe Weather Threatens Your Area

It's time to start considering activating a Severe Weather Net or contemplate your Spotter activities. The need to closely monitor conditions becomes critical. Remember, your area does not have to be under a Warning (or even a Watch) to activate a net or begin your Spotter observations. If you feel the weather is at or approaching severe levels, start your activities.



Resource Quick Reference

Morristown National Weather Service Home Page: NATIONAL WEATHER SERVICE

Weather Outlook: [National Outlook Maps](#)

Hazardous Weather Outlook: [Today](#) [Tomorrow](#) [Day After Tomorrow](#) [Text Version](#) [SPC](#)

Action Storm Watches Warnings

Current Watch / Warning: [weather.in/embot/ent... Morristown](#) in "Available Regions"

Radar Storm Tracking Resources: [The Biz View](#) [NWS NEXRAD](#) [MOSAIC](#)

[Morristown NWS Radar](#)
[Huntsville NWS Radar](#)
[Weather Underground Radar](#)

What to report - Reporting Criteria:

- | | |
|---|---|
| <ul style="list-style-type: none"> • Hail • Strong Winds (58MPH or greater) • Rainfall of 1" or more per hour | <ul style="list-style-type: none"> • Flooding • Wind Damage • Wall or funnel clouds (rotating) • Tornado (on ground / debris cloud) |
|---|---|

Things to Include in all your SKYWARN reports:

- WHO: "Trained SKYWARN Spotter" (name plus callsign if amateur radio operator)
- WHERE: Report your county and state, and position relative to a known town/landmark ("Seven miles west of Galax"). If the event is not occurring where you are, report your position relative to the event/storm ("Looking three miles north of my location"). If applicable, report the movement and speed of the event being observed.
- WHAT: Describe the event/storm (see reporting criteria above)
- WHEN: The exact time of the event/storm, duration of the event, and if the event is still occurring

Take pictures if possible and send to MRX by [Facebook](#) or [email](#)

Reporting to Morristown NWS:

Trained Spotters – Communicate through a local Skywarn Net if possible if unable report by [web-form](#)

Skywarn Net Control Station – Report by [web-form](#) and follow-up by Radio, last resort 800-697-0075

Monitor [Local Storm Reports](#) [\(With Map Location\)](#) (Monitoring local reports can enhance personal safety by forewarn of approaching dangerous conditions and the need to seek shelter. It also allows Skywarn NCS the ability to seek Spotters in contact with the net for confirmation reports)

----- Eastern Tennessee Skywarn -----



[Webpage](#)



[Amateur Radio](#)

[Trained Spotters & Amateur Radio](#)

Keeping Up On Watches & Warnings

The screenshot shows the IEM website interface. At the top, there's a navigation bar with 'IOWA STATE UNIVERSITY Iowa Environmental Mesonet' and a search bar. Below that, there are various menu items like 'Archive', 'Climate', 'Current', etc. The main content area is divided into two columns. The left column contains search filters for 'Reset Application', 'Start', 'End', 'WFO', 'Hail Size', 'LSR Buffer', 'Warning Buffer', and 'Wind'. The right column contains 'Warning Type' and 'LSR Type' dropdowns, along with checkboxes for verification options. Below the filters is a 'Go Cow Go' button and a section titled 'IEM Cow (NWS Storm Based Warning Verification)'. To the right, there's a 'Resource Quick Reference' page for 'District III' with a red arrow pointing to the 'Active Storms & Watches' link.

period of time of your
the hazards on a storm by storm basis. Previously, the
g.



Follow the COW <https://weather.im/iembot/>

Browser window showing the IEMBot Anonymous Monitor interface for Morristown, TN. The page displays a list of weather events and reports, including watches, warnings, convective discussions, and local reports. A red arrow points to the entry: "MRX issues [Severe Thunderstorm Watch](#) for Anderson, Bledsoe, Blount, Bradley, Campbell, Claiborne, Grainger, Hamblen, Hamilton, Hancock, Hawkins, Jefferson, Knox, Loudon, Marion, McMinn, Meigs, Morgan, Polk, Rhea, Roane, Scott, Sequatchie, Sevier, Union [TN] and City of Norton, Lee, Scott, Wise [VA] till Apr 4, 3:00 AM EDT".

Options: Available Rooms: Select a Room... [v] Enable Audio Alerts [] Play Test Sound [] Sound Volume: [Slider]

Timestamp	Author	Message
04/03 9:51 PM	iembot	MRX issues Severe Thunderstorm Watch for Anderson, Bledsoe, Blount, Bradley, Campbell, Claiborne, Grainger, Hamblen, Hamilton, Hancock, Hawkins, Jefferson, Knox, Loudon, Marion, McMinn, Meigs, Morgan, Polk, Rhea, Roane, Scott, Sequatchie, Sevier, Union [TN] and City of Norton, Lee, Scott, Wise [VA] till Apr 4, 3:00 AM EDT
04/03 9:47 PM	iembot	Storm Prediction Center issues Severe Thunderstorm Watch 34 till 7:00 UTC for portions of MRX (Watch Quickview)
04/03 9:17 PM	iembot	Storm Prediction Center issues Mesoscale Discussion #215 (View text)
04/03 8:45 PM	iembot	MRX issues Area Forecast Discussion (AFD) at Apr 3, 8:45 PM EDT
04/03 8:34 PM	iembot	The Storm Prediction Center issues Day 1 Slight Convective Risk at Apr 4, 0:32z for portions of MRX's area
04/03 7:04 PM	iembot	MRX issues Area Forecast Discussion (AFD) at Apr 3, 7:04 PM EDT
04/03 5:26 PM	iembot	CHATTANOOGA ASOS Apr 3 Climate Report : High: 80 Low: 56 Precip: 0.0 Snow: 0.0
04/03 5:26 PM	iembot	TRI-CITIES ASOS Apr 3 Climate Report : High: 79 Low: 45 Precip: 0.03 Snow: 0.0
04/03 5:26 PM	iembot	KNOXVILLE ASOS Apr 3 Climate Report : High: 78 Low: 50 Precip: 0.02 Snow: 0.0
04/03 4:17 PM	iembot	MRX issues Hazardous Weather Outlook (HWO) at Apr 3, 4:17 PM EDT
04/03 3:35 PM	iembot	The Storm Prediction Center issues Day 1 Slight Convective Risk at Apr 3, 19:33z for portions of MRX's area
04/03 3:16 PM	iembot	MRX issues Area Forecast Discussion (AFD) at Apr 3, 3:16 PM EDT
04/03 3:07 PM	iembot	MRX issues Hazardous Weather Outlook (HWO) at Apr 3, 3:07 PM EDT
04/03 1:41 PM	iembot	The Storm Prediction Center issues Day 1 Marginal Convective Risk at Apr 3, 17:39z for portions of MRX's area
04/03 1:30 PM	iembot	MRX issues Area Forecast Discussion (AFD) at Apr 3, 1:30 PM EDT
04/03 12:23 PM	iembot	The Storm Prediction Center issues Day 1 Marginal Convective Risk at Apr 3, 16:22z for portions of MRX's area
04/03 10:36 AM	iembot	MRX issues Area Forecast Discussion (AFD) at Apr 3, 10:36 AM EDT
04/03 8:54 AM	iembot	The Storm Prediction Center issues Day 1 Marginal Convective Risk at Apr 3, 12:52z for portions of MRX's area
04/03 7:21 AM	iembot	MRX issues Area Forecast Discussion (AFD) at Apr 3, 7:21 AM EDT
04/03 4:23 AM	iembot	CHATTANOOGA ASOS Apr 2 Climate Report : High: 80 Low: 57 Precip: 0.0 Snow: 0.0
04/03 4:23 AM	iembot	TRI-CITIES ASOS Apr 2 Climate Report : High: 63 Low: 51 Precip: 0.22 Snow: 0.0
04/03 4:23 AM	iembot	KNOXVILLE ASOS Apr 2 Climate Report : High: 74 Low: 56 Precip: Trace Snow: 0.0
04/03 3:33 AM	iembot	MRX issues Hazardous Weather Outlook (HWO) at Apr 3, 3:33 AM EDT
04/03 3:28 AM	iembot	MRX issues Area Forecast Discussion (AFD) at Apr 3, 3:28 AM EDT
04/03 1:58 AM	iembot	The Storm Prediction Center issues Day 1 Marginal Convective Risk at Apr 3, 5:57z for portions of MRX's area
04/03 1:44 AM	iembot	The Storm Prediction Center issues Day 1 Slight Convective Risk at Apr 3, 5:42z for portions of MRX's area

This tool presents Watches, Warnings,
Convective Discussions, and Local Reports in:

REAL-TIME

Browser address bar: <https://mesonet.agron.iastate.edu/vtec/#2018-O-NEW-KMRX-SV-A-0034/USCOMP-N0Q>

Navigation: iastate.edu Index | Directory Maps Safety Sign Ons

IOWA STATE UNIVERSITY
Iowa Environmental Mesonet

Search:

CONTACT US | DISCLAIMER | APPS

Archive | Climate | Current | Info | GIS | Networks | Roads | Svr Wx | Webcams

Find VTEC Product:
 Select Forecast Office: [KMRX] MORRISTOWN
 Phenomena: Severe Thunderstorm (SV)
 Significance: Watch (A)
 Event Number: 34
 Event Year: 2018

Help | Event Info | **Text Data** | Interactive Map | Storm Reports | List Events

2018 [KMRX] MORRISTOWN Severe Thunderstorm (SV) Watch (A) Number 34

Listing of Counties/Parishes/Zones Included in Product

Show 10 entries

UGC	Name	Status	Issuance	Issue	Initial Expire	Expire
TNC073	Hawkins	NEW	2018-04-04T01:51:00Z	2018-04-04T01:51:00Z	2018-04-04T07:00:00Z	2018-04-04T07:00:00Z
TNC089	Jefferson	NEW	2018-04-04T01:51:00Z	2018-04-04T01:51:00Z	2018-04-04T07:00:00Z	2018-04-04T07:00:00Z
TNC093	Knox	NEW	2018-04-04T01:51:00Z	2018-04-04T01:51:00Z	2018-04-04T07:00:00Z	2018-04-04T07:00:00Z
TNC105	Loudon	NEW	2018-04-04T01:51:00Z	2018-04-04T01:51:00Z	2018-04-04T07:00:00Z	2018-04-04T07:00:00Z
TNC107	McMinn	NEW	2018-04-04T01:51:00Z	2018-04-04T01:51:00Z	2018-04-04T07:00:00Z	2018-04-04T07:00:00Z
TNC115	Marion	NEW	2018-04-04T01:51:00Z	2018-04-04T01:51:00Z	2018-04-04T07:00:00Z	2018-04-04T07:00:00Z
TNC121	Meigs	NEW	2018-04-04T01:51:00Z	2018-04-04T01:51:00Z	2018-04-04T07:00:00Z	2018-04-04T07:00:00Z
TNC123	Monroe	NEW	2018-04-04T01:51:00Z	2018-04-04T01:51:00Z	2018-04-04T07:00:00Z	2018-04-04T07:00:00Z
TNC129	Morgan	NEW	2018-04-04T01:51:00Z	2018-04-04T01:51:00Z	2018-04-04T07:00:00Z	2018-04-04T07:00:00Z
TNC139	Polk	NEW	2018-04-04T01:51:00Z	2018-04-04T01:51:00Z	2018-04-04T07:00:00Z	2018-04-04T07:00:00Z

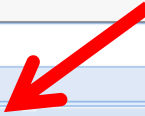
Showing 11 to 20 of 30 entries Previous 1 **2** 3 Next

RADAR Composite at Issuance Time

Clicking on the hyperlink in the COW list takes you to an in-depth description of the event.

Browser address bar: <https://weather.im/iembot/>

Navigation: IEMBot Anonymous Monitor | [IEMBot Project Homepage](#) | [IEM Homepage](#) | [weather.IM Homepage](#)

Options: Help | Saved Items | **Morristown** 

Available Rooms: Select a Room... Clear Room Log Export to HTML Print Log Save Selected View As HTML

Timestamp Author Message

Roomname	Date	Author	Message
mrxchat	2018/04/03 9:51 PM	iembot	MRX issues Severe Thunderstorm Watch for Anderson, Bledsoe, Blount, Bradley, Campbell, Claiborne, Grainger, Hamblen, Hamilton, Hancock, Hawkins, Jefferson, Knox, Loudon, Marion, McMinn, Meigs, Monroe, Morgan, Polk, Rhea, Roane, Scott, Sequatchie, Sevier, Union [TN] and City of Norton, Lee, Scott, Wise [VA] till Apr 4, 3:00 AM EDT
mrxchat	2018/04/03 9:47 PM	iembot	Storm Prediction Center issues Severe Thunderstorm Watch 34 till 7:00 UTC for portions of MRX (Watch Quickview)
mrxchat	2018/04/03 9:17 PM	iembot	Storm Prediction Center issues Mesoscale Discussion #215 (View text)
mrxchat	2018/04/03 8:45 PM	iembot	MRX issues Area Forecast Discussion (AFD) at Apr 3, 8:45 PM EDT
mrxchat	2018/04/03 8:34 PM	iembot	The Storm Prediction Center issues Day 1 Slight Convective Risk at Apr 4, 0:32z for portions of MRX's area
mrxchat	2018/04/03 7:04 PM	iembot	MRX issues Area Forecast Discussion (AFD) at Apr 3, 7:04 PM EDT
mrxchat	2018/04/03 5:26 PM	iembot	CHATTANOOGA ASOS Apr 3 Climate Report : High: 80 Low: 56 Precip: 0.0 Snow: 0.0
mrxchat	2018/04/03 5:26 PM	iembot	TRI-CITIES ASOS Apr 3 Climate Report : High: 79 Low: 45 Precip: 0.03 Snow: 0.0
mrxchat	2018/04/03 5:26 PM	iembot	KNOXVILLE ASOS Apr 3 Climate Report : High: 78 Low: 50 Precip: 0.02 Snow: 0.0
mrxchat	2018/04/03 4:17 PM	iembot	MRX issues Hazardous Weather Outlook (HWO) at Apr 3, 4:17 PM EDT
mrxchat	2018/04/03 2:25 PM	iembot	The Storm Prediction Center issues Day 1 Slight Convective Risk at Apr 3, 19:33z for portions of MRX's area

04/03 1:58 AM iembot The Storm Prediction Center issues [Day 1 Marginal Convective Risk](#) at Apr 3, 5:57z for portions of MRX's area

04/03 1:44 AM iembot The Storm Prediction Center issues [Day 1 Slight Convective Risk](#) at Apr 3, 5:42z for portions of MRX's area

The COW list may also be viewed in HTML by clicking on the tab at the top of the page.

Phenomena

Severe Thunderstorm (SV) ▼

Significance

Warning (W) ▼

Event Number

32

Event Year

2018 ▼

Q Load Product

All Issuance

547
WUUS54 KMRX 040515
SVRMRX
TNC011-065-107-121-143-040600-
/O.NEW.KMRX.SV.W.0032.180404T0515Z-180404T0600Z/

BULLETIN - IMMEDIATE BROADCAST REQUESTED
Severe Thunderstorm Warning
National Weather Service Morristown TN
115 AM EDT WED APR 4 2018

The National Weather Service in Morristown has issued a

- * Severe Thunderstorm Warning for...
Rhea County in east Tennessee...
Bradley County in east Tennessee...
Meigs County in east Tennessee...
McMinn County in east Tennessee...
Hamilton County in east Tennessee...
- * Until 200 AM EDT
- * At 115 AM EDT, severe thunderstorms were located along a line extending from near Spring City to near Lookout Mountain, moving east at 50 mph.

HAZARD...60 mph wind gusts and quarter size hail.

SOURCE...Radar indicated.

IMPACT...Hail damage to vehicles is expected. Expect wind damage to roofs, siding, and trees.

Clicking on the link in any line will take you to a discussion or text version of the alert. There is often a great deal of useful information on those pages.

Browser address bar: <https://weather.im/iembot/>

Page Title: IEMBot Anonymous Monitor | [IEMBot Project Homepage](#) | [IEM Homepage](#) | [weather.IM Homepage](#)

Options: Help | Saved Items | **Morristown**

Available Rooms: Select a Room... [v]

Enable Audio Alerts

Play Test Sound

Sound Volume: [Slider]

Actions: Clear Room Log | Export to HTML | Print Log | Save Selected | View As HTML | Loading...

Timestamp	Author	Message
04/04 1:55 AM	iembot	3 SW Sandlick [Claiborne Co, TN] TRAINED SPOTTER reports TSTM WND DMG at 1:25 AM EDT -- TREES DOWN NEAR CEDAR GROVE MARINA OFF HWY 33.
04/04 1:55 AM	iembot	5 NE Spring City [Rhea Co, TN] 911 CALL CENTER reports TSTM WND DMG at 1:30 AM EDT -- TREE DOWN IN THE COMMUNITY OF MUDDY CREEK.
04/04 1:55 AM	iembot	Decatur [Meigs Co, TN] TRAINED SPOTTER reports HAIL of mothball size (M0.50 INCH) at 1:32 AM EDT --
04/04 1:53 AM	iembot	MRX issues SIGNIFICANT WEATHER ADVISORY FOR SOUTHEASTERN BRADLEY, POLK, McMINN AND MONROE COUNTIES UNTIL 245 AM EDT for Bradley, East Polk, McMinn, Northwest Monroe, Southeast Monroe, West Polk [TN] till 2:45 AM EDT
04/04 1:50 AM	iembot	MRX updates Severe Thunderstorm Warning [wind: 60 MPH, hail: <.75 IN] (cancels Claiborne, Knox, Union [TN], continues Grainger, Hamblen, Hancock, Hawkins, Jefferson [TN]) till 2:30 AM EDT.
04/04 1:48 AM	iembot	Storm Prediction Center issues Mesoscale Discussion #220 (View text)
04/04 1:47 AM	iembot	MRX issues Severe Thunderstorm Warning [wind: 60 MPH, hail: <.75 IN] for City of Norton, Lee, Russell, Scott, Wise [VA] till 2:30 AM EDT
04/04 1:44 AM	iembot	MRX issues Severe Thunderstorm Warning [wind: 60 MPH, hail: <.75 IN] for Blount, Jefferson, Knox, Sevier [TN] till 2:30 AM EDT
04/04 1:40 AM	iembot	MRX updates Severe Thunderstorm Warning [wind: 60 MPH, hail: <.75 IN] (cancels Claiborne [TN], continues Hancock [TN] and Lee [VA]) till 2:00 AM EDT.
04/04 1:39 AM	iembot	LA Follette [Campbell Co, TN] 911 CALL CENTER reports TSTM WND DMG at 12:36 AM EDT -- SEVERAL TREES DOWN. TREE ON HOUSE WITH DAMAGE. A TRAILER WITH ROOF BLOWN OFF.
04/04 1:39 AM	iembot	MRX updates Severe Thunderstorm Warning [wind: 60 MPH, hail: 1.00 IN] (cancels Rhea [TN], continues Bradley, Hamilton, McMinn, Meigs [TN]) till 2:00 AM EDT.
04/04 1:26 AM	iembot	MRX issues Severe Thunderstorm Warning [wind: 60 MPH, hail: <.75 IN] for Claiborne, Grainger, Hamblen, Hancock, Hawkins, Jefferson, Knox, Union [TN] till Apr 4, 2:30 AM EDT
04/04 1:20 AM	iembot	Oneida [Scott Co, TN] 911 CALL CENTER reports TSTM WND DMG at 12:45 AM EDT -- SEVERAL TREES AND POWERLINES DOWN ACROSS THE COUNTY.
04/04 1:17 AM	iembot	MRX issues Severe Thunderstorm Warning [wind: 60 MPH, hail: <.75 IN] for Claiborne, Hancock [TN] and Lee [VA] till 2:00 AM EDT
04/04 1:15 AM	iembot	MRX issues Severe Thunderstorm Warning [wind: 60 MPH, hail: 1.00 IN] for Bradley, Hamilton, McMinn, Meigs, Rhea [TN] till 2:00 AM EDT
04/04 1:08 AM	iembot	MRX updates Severe Thunderstorm Warning [wind: 60 MPH, hail: <.75 IN] (cancels Scott [TN], continues Anderson, Campbell, Claiborne, Union [TN]) till 1:30 AM EDT.
04/04 1:05 AM	iembot	MRX issues Area Forecast Discussion (AFD) at Apr 4, 1:05 AM EDT
04/04 1:03 AM	iembot	MRX continues Severe Thunderstorm Warning [wind: 60 MPH, hail: 1.00 IN] for Bledsoe, Hamilton, Marion, Meigs, Rhea, Sequatchie [TN] till 1:15 AM EDT
04/04 1:00 AM	iembot	MRX issues Severe Thunderstorm Warning [wind: 60 MPH, hail: <.75 IN] for Anderson, Knox, Loudon, Roane [TN] till 1:45 AM EDT
04/04 12:50 AM	iembot	MRX continues Severe Thunderstorm Warning [wind: 60 MPH, hail: <.75 IN] for Anderson, Campbell, Claiborne, Scott, Union [TN] till 1:30 AM EDT
04/04 12:38 AM	iembot	MRX continues Severe Thunderstorm Warning [wind: 60 MPH, hail: 1.00 IN] for Bledsoe, Hamilton, Marion, Meigs, Rhea, Sequatchie [TN] till 1:15 AM EDT
04/04 12:33 AM	iembot	MRX continues Severe Thunderstorm Warning [wind: 60 MPH, hail: <.75 IN] for Morgan, Scott [TN] till 1:00 AM EDT
04/04 12:24 AM	iembot	MRX issues Severe Thunderstorm Warning [wind: 60 MPH, hail: <.75 IN] for Anderson, Campbell, Claiborne, Scott, Union [TN] till Apr 4, 1:30 AM EDT

Spotter and observer reports also show up on the real-time list. Note the hail report from Meigs county...that came from our Skywarn net the night of 4/4/18

Maintaining Situational Awareness

EAST TENNESSEE **District III**
Rhea, Meigs, McMinn, Monroe, Bradley, Polk Counties

Resource Quick Reference

Morristown National Weather Service Home Page: [NATIONAL WEATHER SERVICE](#)

Weather Outlook: [National Outlook Maps](#)

Hazardous Weather Outlook: [Today](#) [Tomorrow](#) [Day After Tomorrow](#) [Text Version](#) [SPC](#)

Active Storms & Watches & Warnings

Current Watch / Warning: [weather.im/iembot/ent... Morristown](#) in "Available Regions"

Radar Storm Tracking Resources: [The Biz View](#) [NWS](#) [MOSAIC](#)

[Morristown NWS Radar](#) [Huntsville NWS Radar](#) [Weather Underground Radar](#)

What to report - Reporting Criteria:

- Hail
- Strong Winds (58MPH or greater)
- Rainfall of 1" or more per hour
- Flooding
- Wind Damage
- Wall or funnel clouds (rotating)
- Tornado (on ground / debris cloud)

Things to Include in all your SKYWARN reports:


- **WHO:** "Trained SKYWARN Spotter" (name plus callsign if amateur radio operator)
- **WHERE:** Report your county and state, and position relative to a known town/landmark ("Seven miles west of Galax"). If the event is not occurring where you are, report your position relative to the event/storm ("Looking three miles north of my location"). If applicable, report the movement and speed of the event being observed.

Keeping track of storm movement, development, and structure is **IMPERATIVE** to an effective Severe Weather Net and Spotter observations.

Navigating the Radar Page

National Weather Service Enhanced Radar Image Loop
Knoxville/Tri Cities, TN Radar

Go to: [Standard Version](#) Local weather forecast by "City, ST" [Radar Status Message](#)

Adjacent Radars:


Short Range Images
Reflectivity: [Loop](#)
Composite: [Loop](#)
Base: [Loop](#)
Velocity: [Loop](#)
Storm Relative: [Loop](#)
Base: [Loop](#)
Rainfall: [Loop](#)
1-Hour Total: [Loop](#)
Storm Total: [Loop](#)

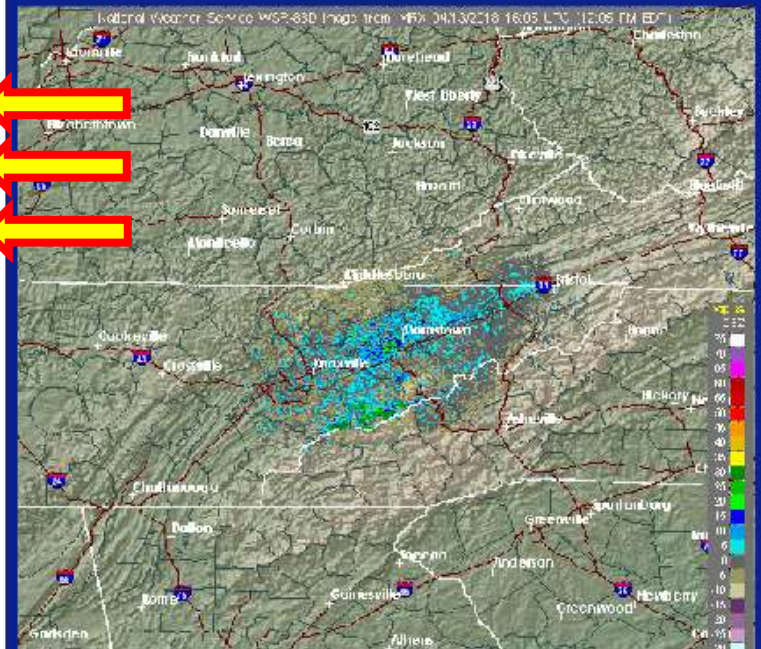
Long Range Images
Reflectivity: [Loop](#)
Base: [Loop](#)

U.S. Views
Reflectivity: [Loop](#)
National: [Loop](#)
Alaska: [Loop](#)
Hawaii: [Loop](#)
Guam: [Loop](#)
Puerto Rico: [Loop](#)
Radars by State: [Loop](#)

Additional Info:
[Radar FAQ](#)
[Downloading Images](#)
[GIS Users](#) [KML](#)
[Doppler University](#)
[Color Blindness Tool](#)
[Credits](#)

Composite Reflectivity
NWS Knoxville-Tri-cities, TN
12:05 PM EDT Fri Apr 13 2018

National Weather Service WSR-88D Image from WSR 3413218 18:05 LTV 12:05 PM EDT

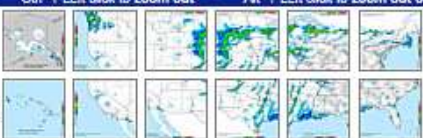


Warnings: [Tornado](#) [Severe Thunderstorm](#) [Flash Flood](#) [Special Message](#)

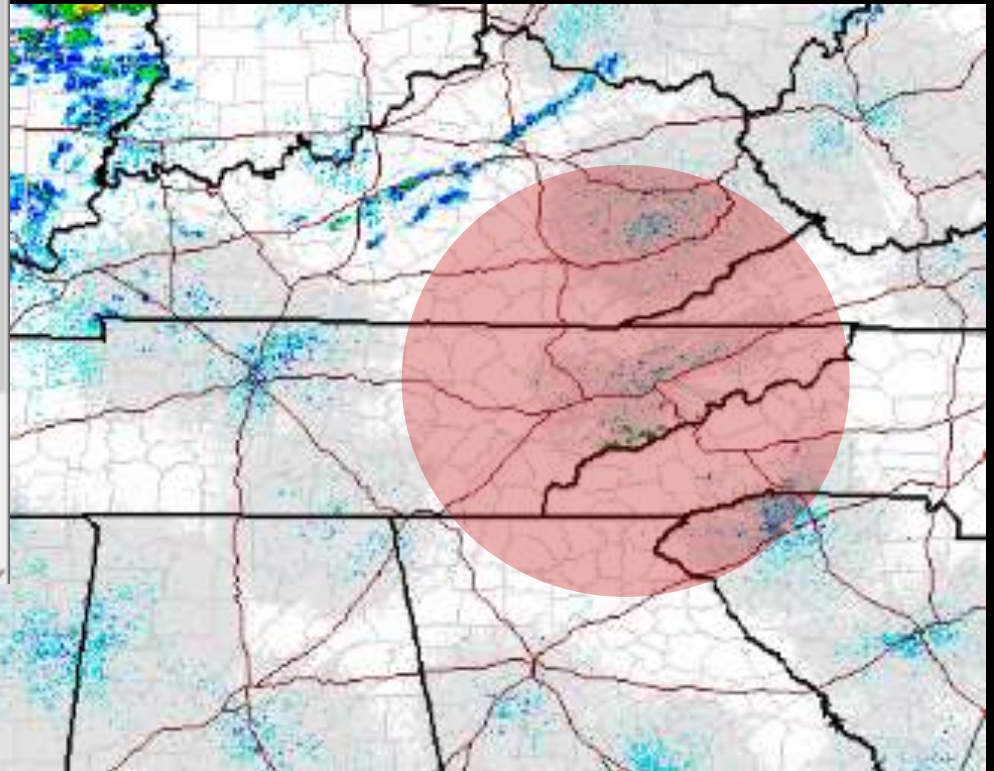
Stop [Rock](#) [<](#) [>](#) [<<](#) [>>](#) Set Animation Speed: [AutoUpdate is Off](#) [Refresh](#)

Topo Radar Counties Rivers Highways Cities Warnings Legend

Left click to zoom "Ctrl" + Left click to zoom out "Alt" + Left click to zoom out completely

National Radar

(click image)

Morristown Radar



Huntsville (Hytop) Radar

National Weather Service Enhanced Radar Image Loop
Huntsville Radar

Go to: [Standard Version](#) Local weather forecast by "City, ST" [Radar Status Message](#)

Adjacent Radars:

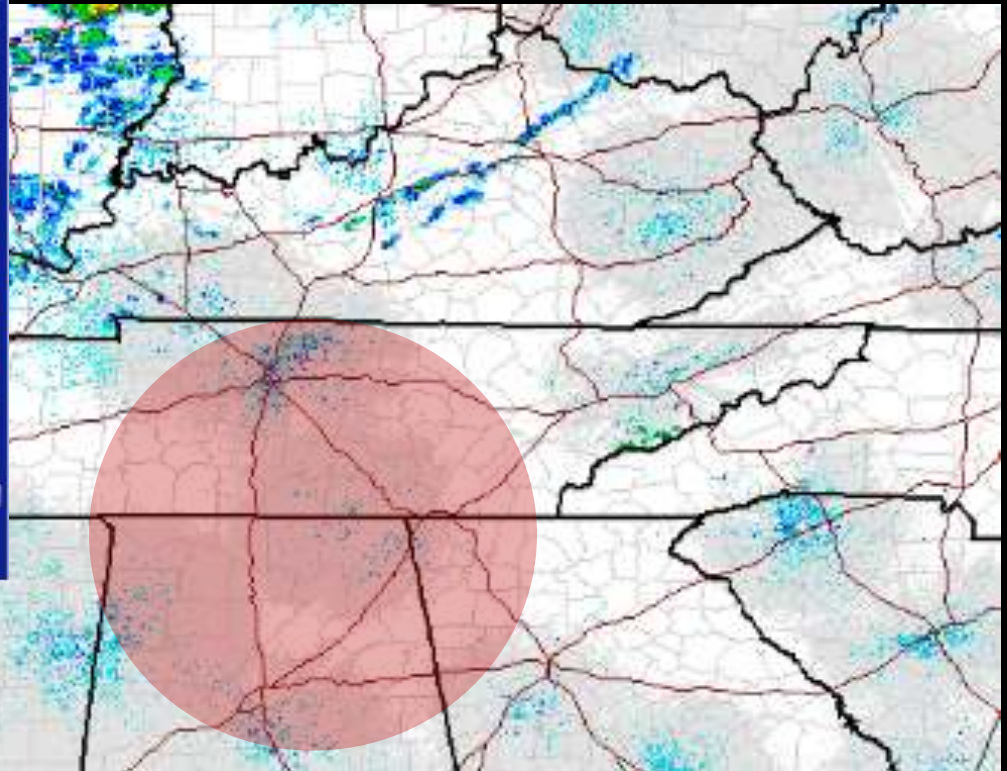

Short Range Images
Reflectivity: Loop
Composite: Loop
Base: Loop
Velocity: Loop
Storm Relative: Loop
Base: Loop
Rainfall: Loop
1-Hour Total: Loop
Storm Total: Loop
Long Range Images
Reflectivity: Loop
Base: Loop
U.S. Views
Reflectivity: Loop
National: Loop
Alaska: Loop
Hawaii: Loop
Guam: Loop
Puerto Rico: Loop
Radars by State: Loop
Additional Info:
[Radar FAQ](#)
[Downloading Images](#)
GIS Users: [KML](#)
[Doppler University](#)
[Color Blindness Tool](#)
[Credits](#)

Composite Reflectivity
NWS Huntsville, AL
10:59 AM CDT Fri Apr 13 2018

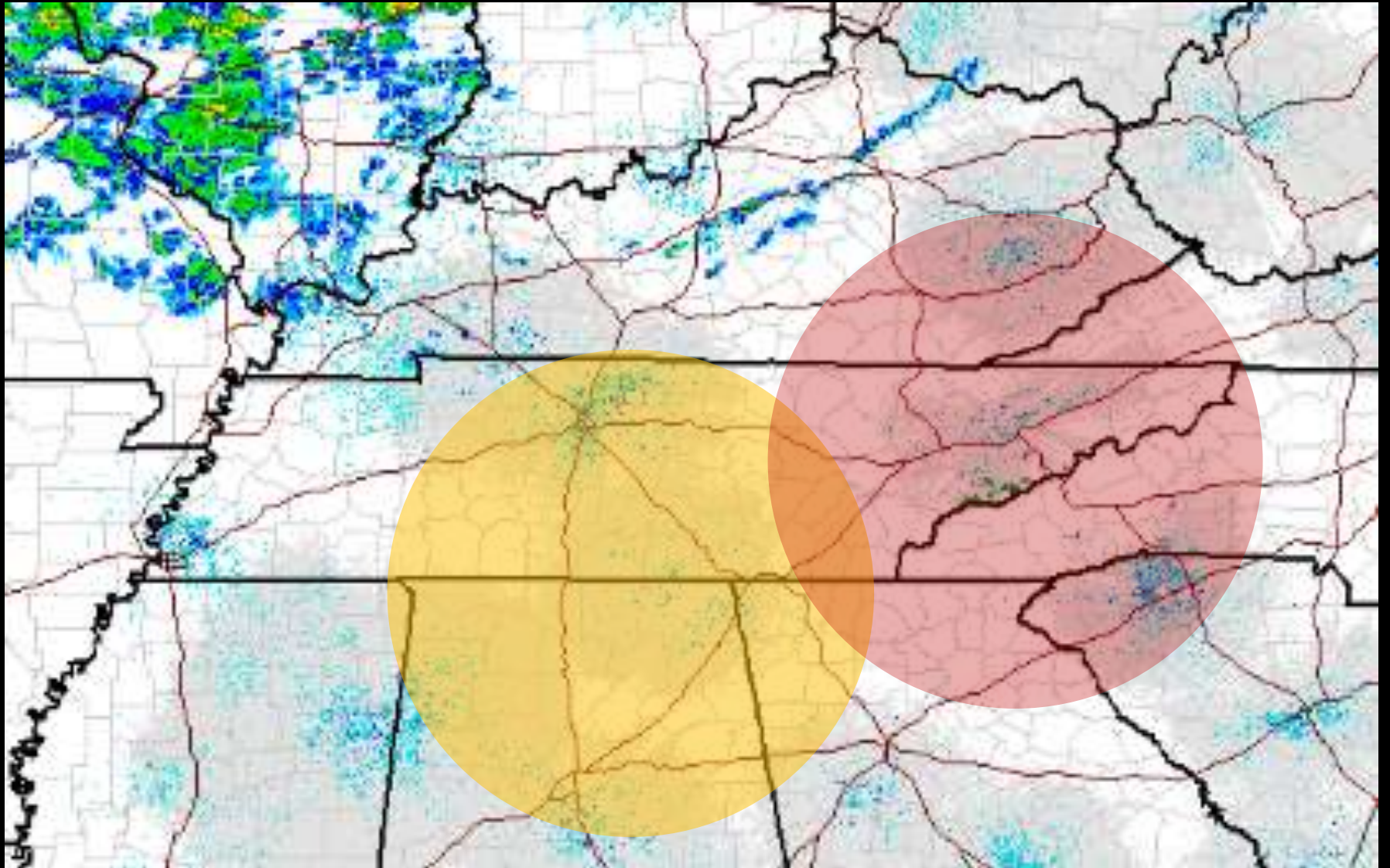


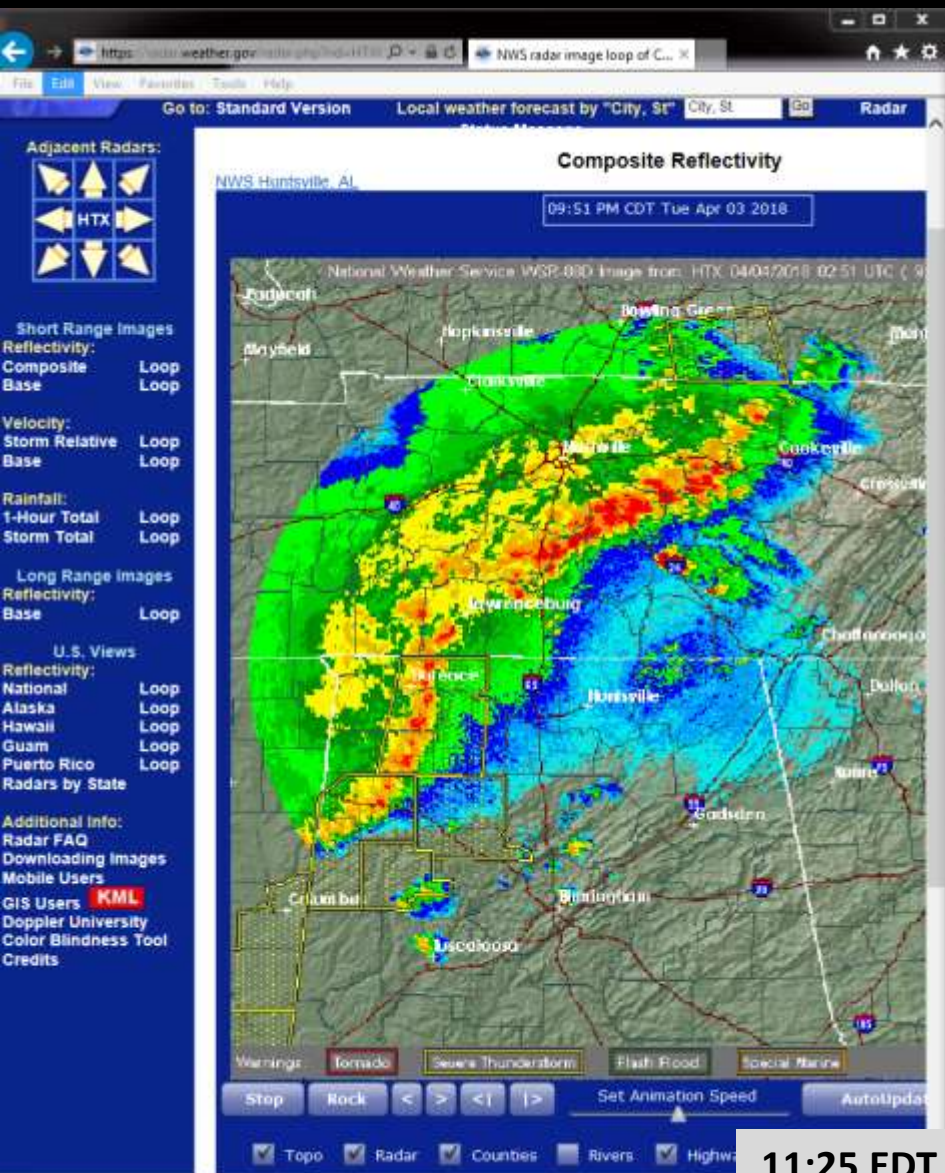
Stop Back  Set Animation Speed AutoUpdate is OFF Refresh

Topo Radar Counties Rivers Highways Cities Warnings Legend

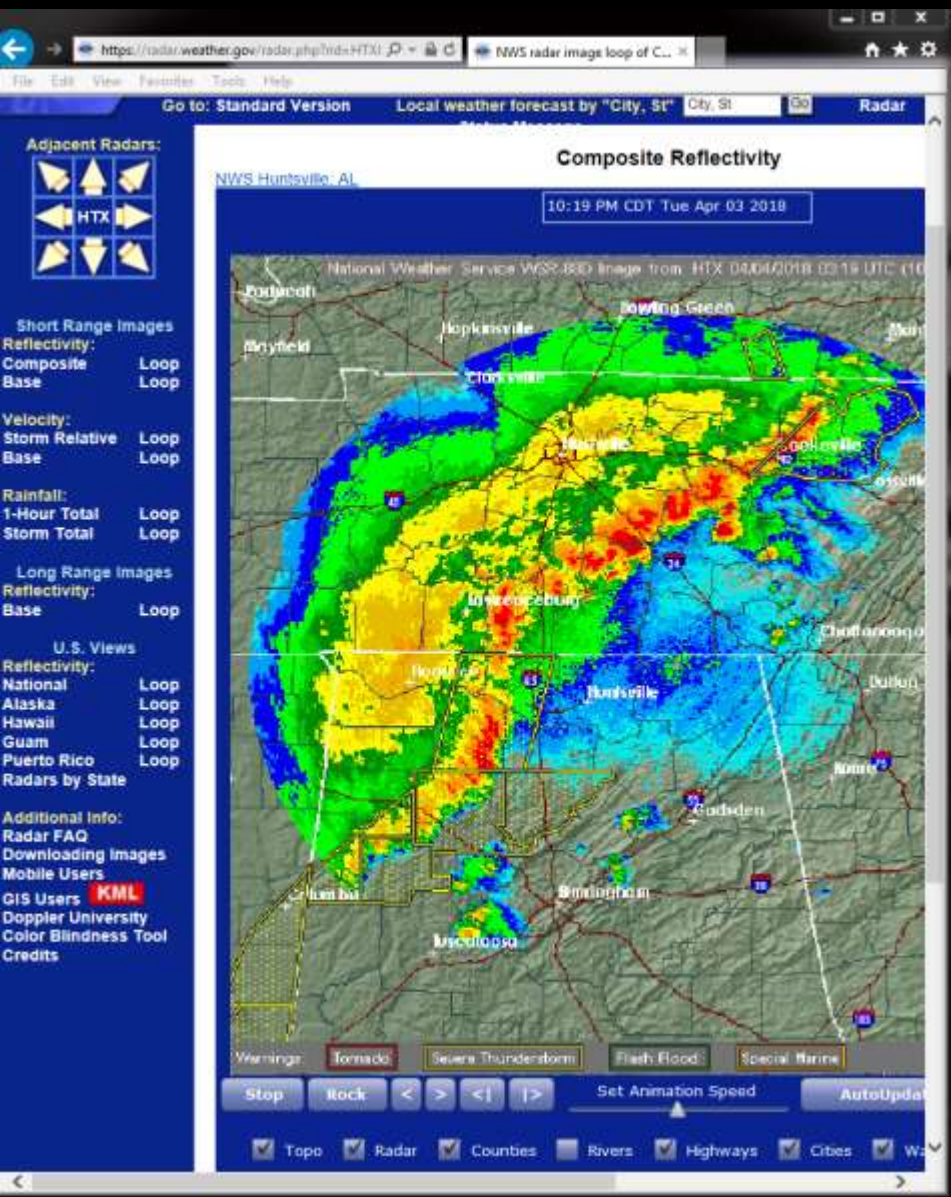


Combined Radar Coverage





11:25 EDT 3 April 2018



https://www.weather.gov/radar.php?prod=HTX

NWS radar image loop of C...

File Edit View Favorites Tools Help

Go to: Standard Version Local weather forecast by "City, ST" City, ST GO Radar

Adjacent Radars:

HTX

Composite Reflectivity

11:14 PM CDT Tue Apr 03 2016

NWS Huntsville, AL

National Weather Service WSR-88D Image from HTX 04/03/2016 04:06 UTC (11:14 PM CDT)

Short Range Images
 Reflectivity: Loop
 Composite Loop
 Base Loop

Velocity:
 Storm Relative Loop
 Base Loop

Rainfall:
 1-Hour Total Loop
 Storm Total Loop

Long Range Images
 Reflectivity: Loop
 Base Loop

U.S. Views
 Reflectivity: Loop
 National Loop
 Alaska Loop
 Hawaii Loop
 Guam Loop
 Puerto Rico Loop
 Radars by State

Additional Info:
 Radar FAQ
 Downloading Images
 Mobile Users
 GIS Users **KML**
 Doppler University
 Color Blindness Tool
 Credits

Warnings: Tornado, Severe Thunderstorm, Flash Flood, Special Marine

Stop Rock < > <| >| Set Animation Speed AutoUpdate

Topo Radar Counties Rivers Highways Cities Wa

https://www.weather.gov/radar.php?prod=MRX

NWS radar image loop of C...

File Edit View Favorites Tools Help

Go to: Standard Version Local weather forecast by "City, ST" City, ST GO Radar Status Message

Adjacent Radars:

MRX

Composite Reflectivity

11:40 PM EDT Tue Apr 03 2016

NWS Knoxville/Tri Cities, TN

National Weather Service WSR-88D Image from MRX 04/03/2016 03:40 UTC (11:40 PM EDT)

Short Range Images
 Reflectivity: Loop
 Composite Loop
 Base Loop

Velocity:
 Storm Relative Loop
 Base Loop

Rainfall:
 1-Hour Total Loop
 Storm Total Loop

Long Range Images
 Reflectivity: Loop
 Base Loop

U.S. Views
 Reflectivity: Loop
 National Loop
 Alaska Loop
 Hawaii Loop
 Guam Loop
 Puerto Rico Loop
 Radars by State

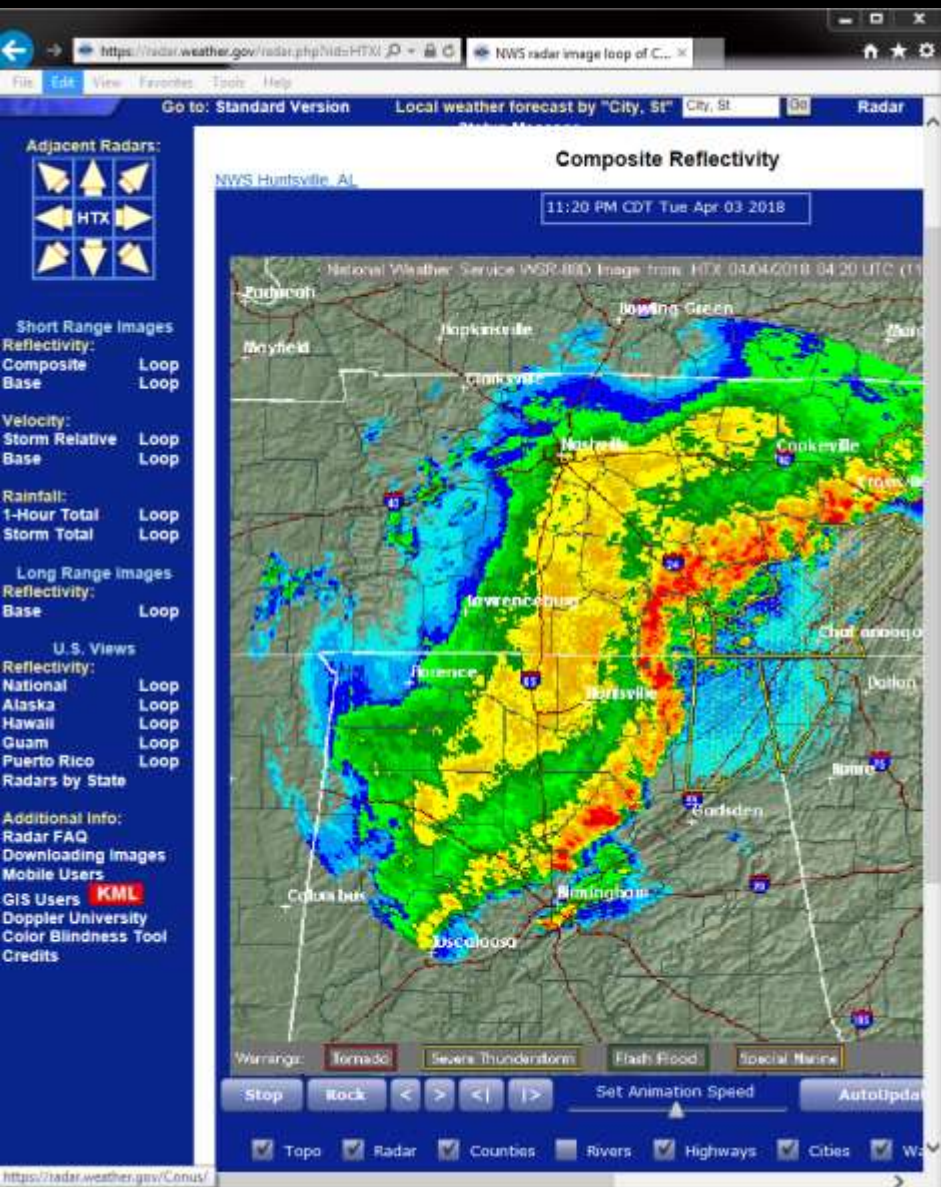
Additional Info:
 Radar FAQ
 Downloading Images
 Mobile Users
 GIS Users **KML**
 Doppler University
 Color Blindness Tool
 Credits

Warnings: Tornado, Severe Thunderstorm, Flash Flood, Special Marine

Stop Back < > <| >| Set Animation Speed AutoUpdate is OFF Refresh

Topo Radar Counties Rivers Highways Cities Warnings Legend

Left click to zoom "Ctrl" + Left click to zoom out "Alt" + Left click to zoom out completely



Setting Up Your Station



Radar (NWS Doppler / changed to two local radars)

Current Watch/Warning

RadarScope App

My radio bench setup during severe weather



A shot of the screen of my tablet running the RadarScope during the approach of a recent storm which shows warning boxes



A shot of the screen of the RadarScope App at the time of the warning in McMinn

Reportable Storm Observations



Resource Quick Reference

Morristown National Weather Service Home Page: NATIONAL WEATHER SERVICE

Weather Outlook: [National Outlook Maps](#)

Hazardous Weather Outlook: [Today](#) [Tomorrow](#) [Day After Tomorrow](#) [Text Version](#) [SPC](#)

Active Storms & Watches / Warnings

Current Watch / Warning: <https://weather.in/iebot/> enter "Morristown" in "Available Rooms:"

Radar Storm Tracking Resources: The Big View [NWS National MOSAIC](#)



[Morristown NWS Radar](#)



[Huntsville NWS Radar](#)



[Weather Underground Radar](#)

What to report - Reporting Criteria:

- Hail
- Strong Winds (58MPH or greater)
- Rainfall of 1" or more per hour
- Flooding
- Wind Damage
- Wall or funnel clouds (with rotation)
- Tornado

Things to Include in all your SKYWARN reports:

- **WHO:** "Trained SKYWARN Spotter" (name plus call sign if amateur radio operator)
- **WHERE:** Report your county and location relative to a known town/landmark ("Seven miles west of Galax"). If the event location is where you are, report your position relative to the event/storm location. If applicable, report the direction, speed, and movement of the event/storm.
- **WHAT:** Describe the event (see reporting criteria above)
- **WHEN:** The exact time of the event/storm, duration of the event, and the event still occurring

Take pictures if possible and send to MRX by [Facebook](#) or [email](#)

Reporting to Morristown NWS:

Trained Spotters – Communicate through a local Skywarn Net if possible if unable report by [web-form](#)

Skywarn Net Control Station – Report by [web-form](#) and follow-up by Radio, last resort 800-697-0075

Monitor [Local Storm Reports](#) [\[With Map Location\]](#) (Monitoring local reports can enhance personal safety by forewarn of approaching dangerous conditions and the need to seek shelter. It also allows Skywarn NCS the ability to seek Spotters in contact with the net for confirmation reports)

Eastern Tennessee Skywarn



[Webpage](#)



[Trained Spotters & Amateur Radio](#)

Be On The Lookout

WHAT to report:

- **Who** – Trained Spotter
- **Where** – Street address or location or a major landmark

What – Reportable event

- **When** – Began / Ended / On-going

Report observing:

- Hail (any size)
- Strong Winds (> 58 MPH)
- Damage related to the storm
- Rainfall in excess of 1" per hr.
- Flooding
- Wall clouds (with rotation)
- Funnel clouds / Tornadoes

Take pictures if possible

Reporting Procedures



Resource Quick Reference

Morristown National Weather Service Home Page:  NATIONAL WEATHER SERVICE

Weather Outlook: [National Outlook Maps](#)

Hazardous Weather Outlook: [Today](#) [Tomorrow](#) [Day After Tomorrow](#) [Text Version](#) [SPC](#)

Active Storms & Watches / Warnings

Current Watch / Warning: <https://weather.im/semobot/>, enter "Morristown" in "Available Rooms:"

Radar Storm Tracking Resources: The Big View [NWS National MOSAIC](#)



[Morristown NWS Radar](#)



[Huntsville NWS Radar](#)



[Weather Underground Radar](#)

What to report - Reporting Criteria:

- Hail
- Strong Winds (58MPH or greater)
- Rainfall of 1" or more per hour
- Flooding
- Wind Damage
- Wall or funnel clouds (rotating)
- Tornado (on ground / debris cloud)

Things to Include in all your SKYWARN reports:

- WHO: "Trained SKYWARN Spotter" (name plus callsign if amateur radio operator)
- WHERE: Report your county and state, and position relative to a known town/landmark ("Seven miles west of Galax"). If the event is not occurring where you are, report your position relative to the event/storm ("Looking three miles north of my location"). If applicable, report the movement and speed of the event being observed.
- WHAT: Describe the event/storm (see reporting criteria above)
- WHEN: The exact time of the event/storm, duration of the event, and if the event is still occurring

Take pictures if possible and send to MRX by Facebook or email

Reporting to Morristown NWS:

Trained Spotters – Communicate through a local Skywarn Net if possible if unable report by [web-form](#)

Skywarn Net Control Station – Report by [web-form](#) and follow-up by Radio, last resort 800-697-0075

Monitor [Local Storm Reports](#) [\(With Map Location\)](#) (Monitoring local reports can enhance personal safety by forewarn of approaching dangerous conditions and the need to seek shelter. It also allows Skywarn NCS the ability to seek Spotters in contact with the net for confirmation reports)

----- Eastern Tennessee Skywarn -----



[Webpage](#)



[Amateur Radio](#)

[Trained Spotters & Amateur Radio](#)

HOW to Report

Spotters:

- Contact a Severe Weather Net
- Use the Web-Form
- If unable by other means, phone **800-697-0075**

Net Control Operators:

- Receive a Spotter report
- Does it meet reporting criteria?
- Report by web-form
- Follow-up report by radio
- If unable by other means, phone **800-697-0075**
- Enter in Net Log

Web-Based Reporting Form

Storm Report

This interface is intended to be used solely for the relay of storm information to the NWS. Other comments or information should be sent to the National Weather Service Morristown, Tennessee.

Event Location

Enter date/time/location of event. Please reference to major roadway or intersection for events within towns/cities.

Time Zone

Eastern

Central

County

Choose County from drop menu

Location (example 7NW Mytown or Street Address)

Date & Time

Month Day 2018 Hr : Min AM

Event Type (Select all that apply)

Click box next to events you observed. Next, select appropriate sub-descriptor in pull down menus to describe event.

Flood

Hail

High Wind Speed

Tornado / Funnel Cloud

Wind Damage

- Interactive, easy to use
- Drop-down menus
- Immediately seen by NWS

Don't Forget:

In the “Additional Details” box, be sure to put **“Trained Spotter”** to add credibility to the report.

Monitor What Others Are Reporting



Resource Quick Reference

Morristown National Weather Service Home Page: NATIONAL WEATHER SERVICE

Weather Outlook: [National Outlook Maps](#)

Hazardous Weather Outlook: [Today](#) [Tomorrow](#) [Day After Tomorrow](#) [Text Version](#) [SPC](#)

Active Storms & Watches / Warnings

Current Watch / Warning: <https://weather.im/semobot/> enter "Morristown" in "Available Rooms:"

Radar Storm Tracking Resources: The Big View [NWS National MOSAIC](#)



What to report - Reporting Criteria:

- Hail
- Strong Winds (58MPH or greater)
- Rainfall of 1" or more per hour
- Flooding
- Wind Damage
- Wall or funnel clouds (rotating)
- Tornado (on ground / debris cloud)

Things to Include in all your SKYWARN reports:

- **WHO:** "Trained SKYWARN Spotter" (name plus callsign if amateur radio operator)
- **WHERE:** Report your county and state, and position relative to a known town/landmark ("Seven miles west of Galax"). If the event is not occurring where you are, report your position relative to the event/storm ("Looking three miles north of my location"). If applicable, report the movement and speed of the event being observed.
- **WHAT:** Describe the event/storm (see reporting criteria above)
- **WHEN:** The exact time of the event/storm, duration of the event, and if the event is still occurring

Take pictures if possible and send to MRX by [Facebook](#) or [email](#)

Reporting to Morristown NWS

Trained Spotters - Communicate through [Facebook](#) or [Twitter](#) Skywarn Net if possible if unable report by [web-form](#)

Spotters - Report to [Facebook](#) or [Twitter](#) and follow up by Radio. Just report 800-667-8877

Monitor [Local Storm Reports](#) [\(With Map Location\)](#) (Monitoring local reports can enhance personal safety by forewarn of approaching dangerous conditions and the need to seek shelter. It also allows Skywarn NCS the ability to seek Spotters in contact with the net for confirmation reports)



[Webpage](#)



[Amateur Radio](#)

[Trained Spotters & Amateur Radio](#)

What others are reporting:

- These links are for local reports
- Can give you an idea of what to expect (hazard, intensity, safety)
- Interactive map shows location of the event
- Can validate what you are seeing

You are a Part of a Bigger Community



Resource Quick Reference

Morristown National Weather Service Home Page:  NATIONAL WEATHER SERVICE

Weather Outlook: [National Outlook Maps](#)

Hazardous Weather Outlook: [Today](#) [Tomorrow](#) [Day After Tomorrow](#) [Text Version](#) [SPC](#)

Active Storms & Watches / Warnings

Current Watch / Warning: <https://weather.im/embot/> enter "Morristown" in "Available Rooms:"

Radar Storm Tracking Resources: The Biz View [NWS National MOSAIC](#)



[Morristown NWS Radar](#)



[Huntsville NWS Radar](#)



[Weather Underground Radar](#)

What to report - Reporting Criteria:

- Hail
- Strong Winds (58MPH or greater)
- Rainfall of 1" or more per hour
- Flooding
- Wind Damage
- Wall or funnel clouds (rotating)
- Tornado (on ground / debris cloud)

Things to Include in all your SKYWARN reports:

- **WHO:** "Trained SKYWARN Spotter" (name plus callsign if amateur radio operator)
- **WHERE:** Report your county and state, and position relative to a known town/landmark ("Seven miles west of Galax"). If the event is not occurring where you are, report your position relative to the event/storm ("Looking three miles north of my location"). If applicable, report the movement and speed of the event being observed.
- **WHAT:** Describe the event/storm (see reporting criteria above)
- **WHEN:** The exact time of the event/storm, duration of the event, and if the event is still occurring

Take pictures if possible and send to MRX by [Facebook](#) or [email](#)

Reporting to Morristown NWS:

Trained Spotters – Communicate through a local Skywarn Net if possible. Submit report by [web-form](#)

Skywarn Net Control Station – Report by [web-form](#) and follow-up by radio, last resort 800-697-0075

Monitor [Local Storm Reports](#) [\[With Map Location\]](#) (Monitoring local reports can enhance personal safety by forewarn of approaching dangerous conditions and help you to seek shelter. It also allows Skywarn NCS the ability to seek Spotters in contact with the net for confirmation reports)

----- Eastern Tennessee Skywarn -----



[Webpage](#)

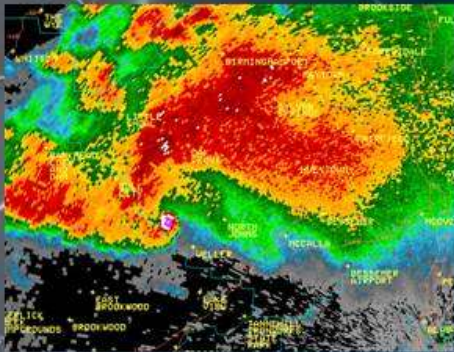


[Amateur Radio](#)

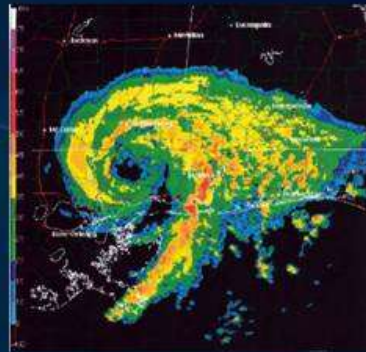
[Trained Spotters & Amateur Radio](#)

Much, Much More

Tornado-Producing Thunderstorm Types



Supercell Thunderstorms

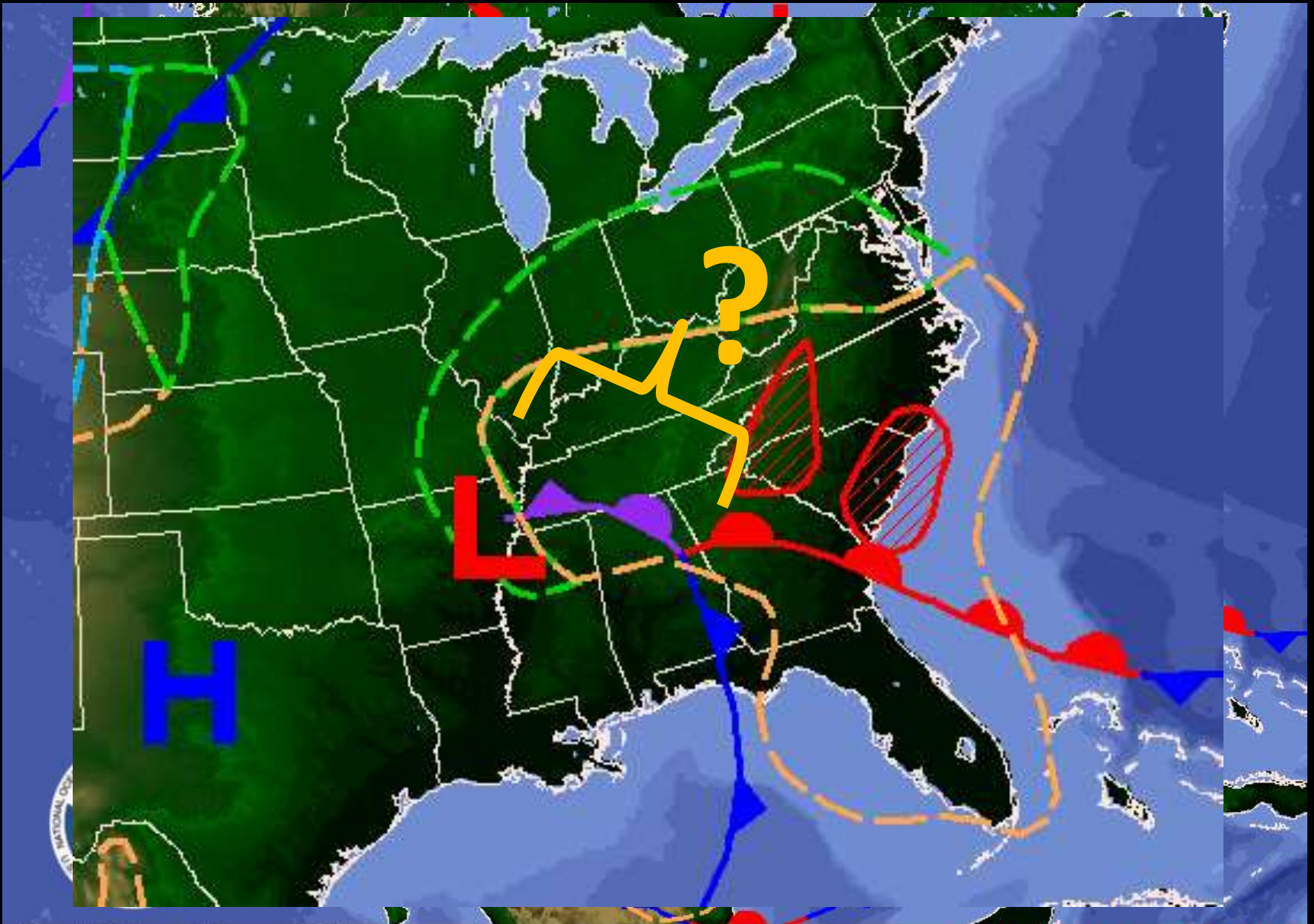


Tropical Rain Band
Thunderstorms



All Other Non-Supercell
Thunderstorms



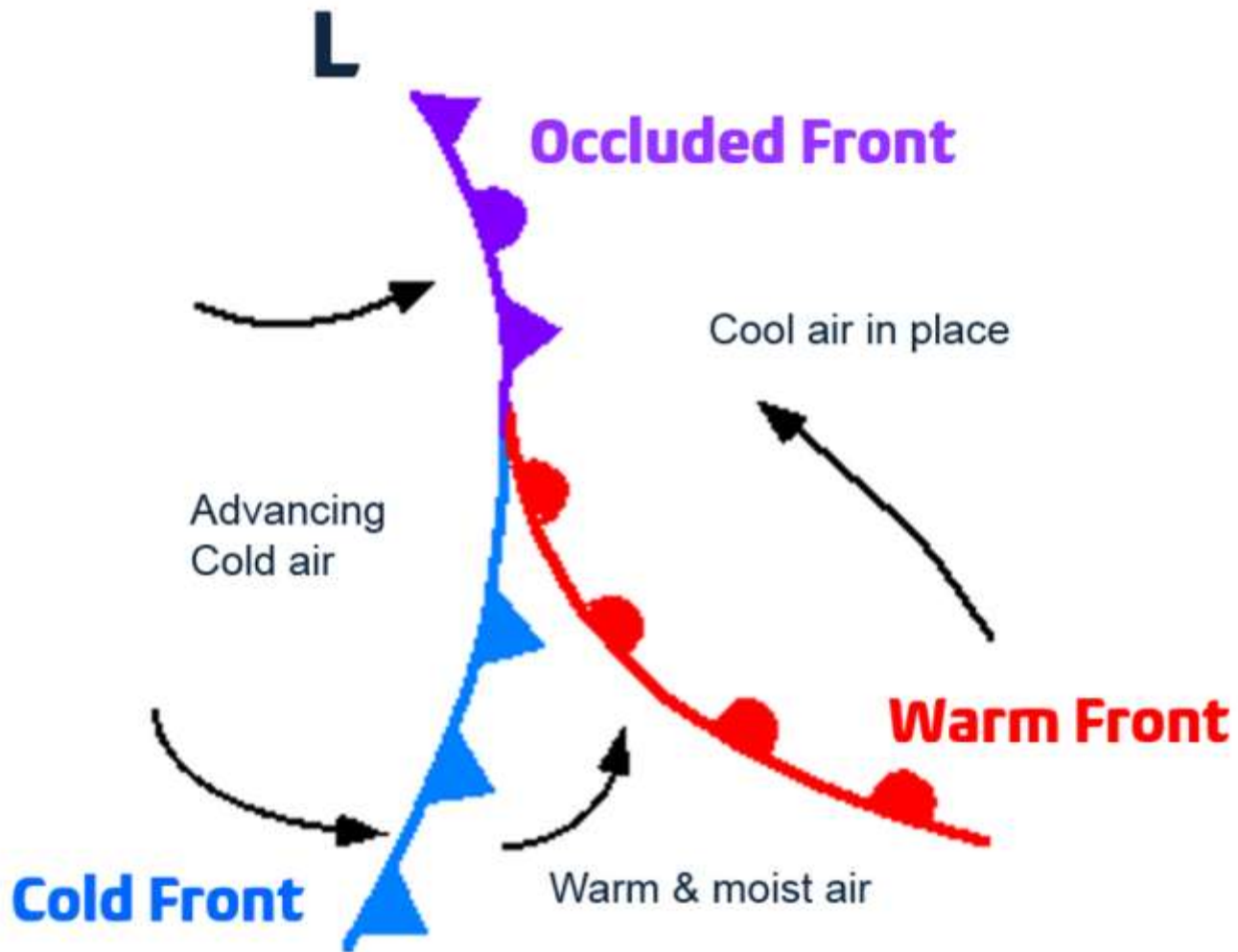


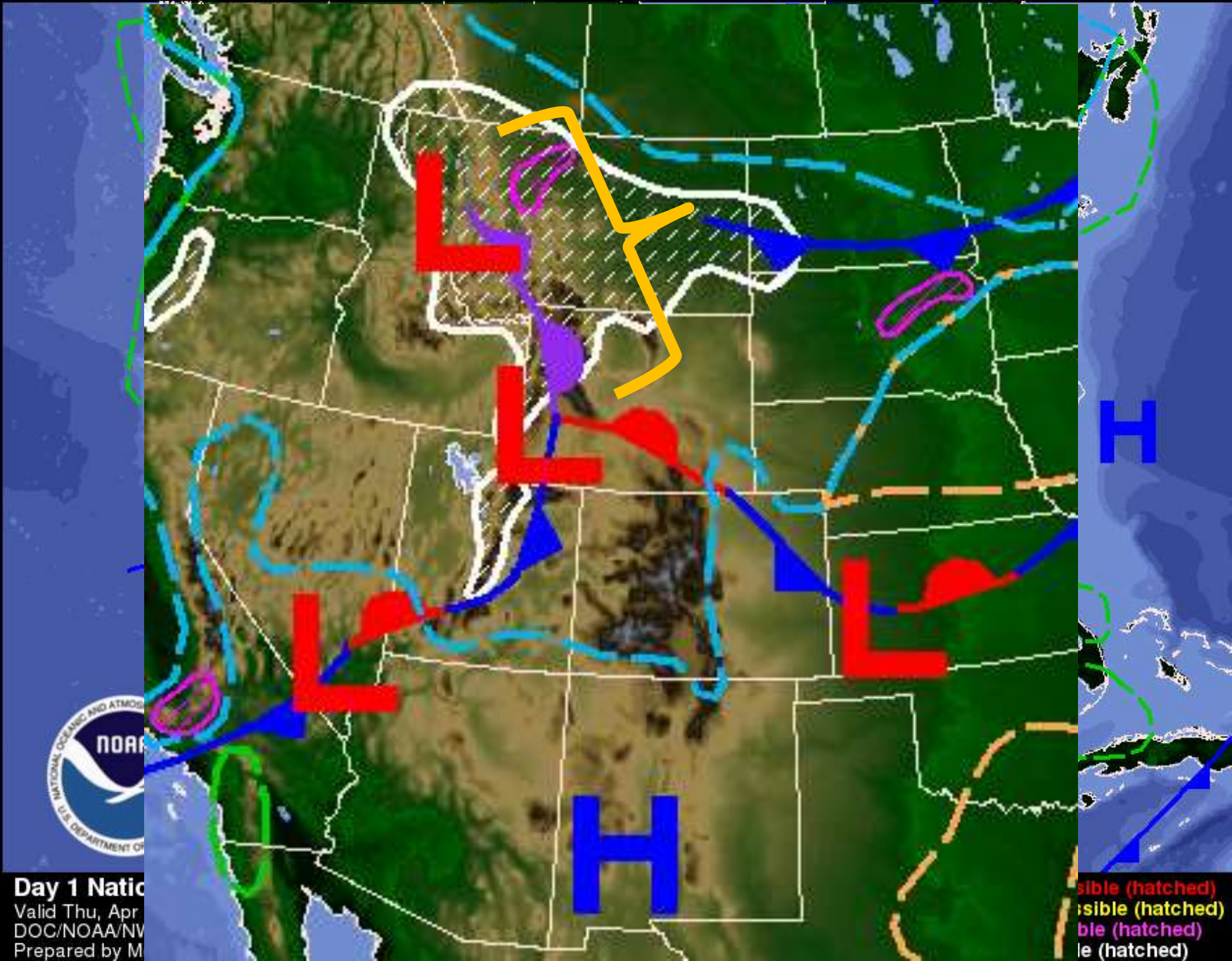
Day 1 National Forecast Chart

Valid Mon, Apr 23, 2018, issued 4:49 AM EDT
 DOC/NOAA/NWS/NCEP/Weather Prediction Center
 Prepared by McCreynolds with WPC/SPC/NHC forecasts

Rain
 Rain and T'Storms
 Rain and Snow
 Snow

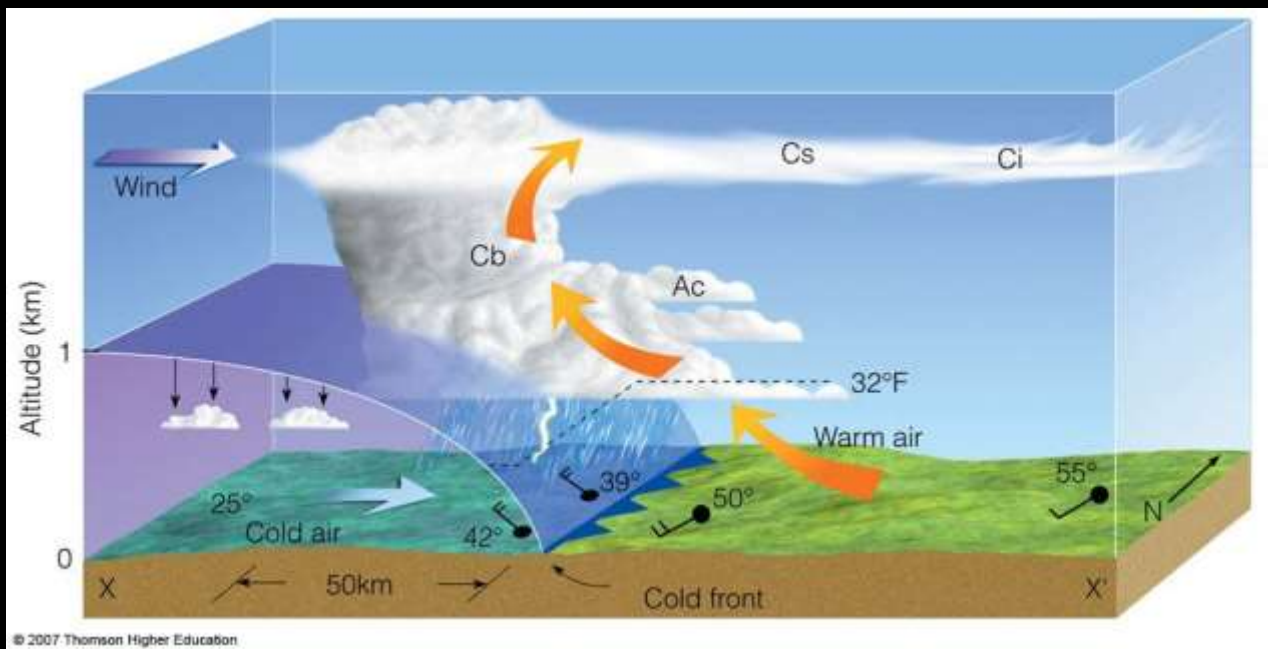
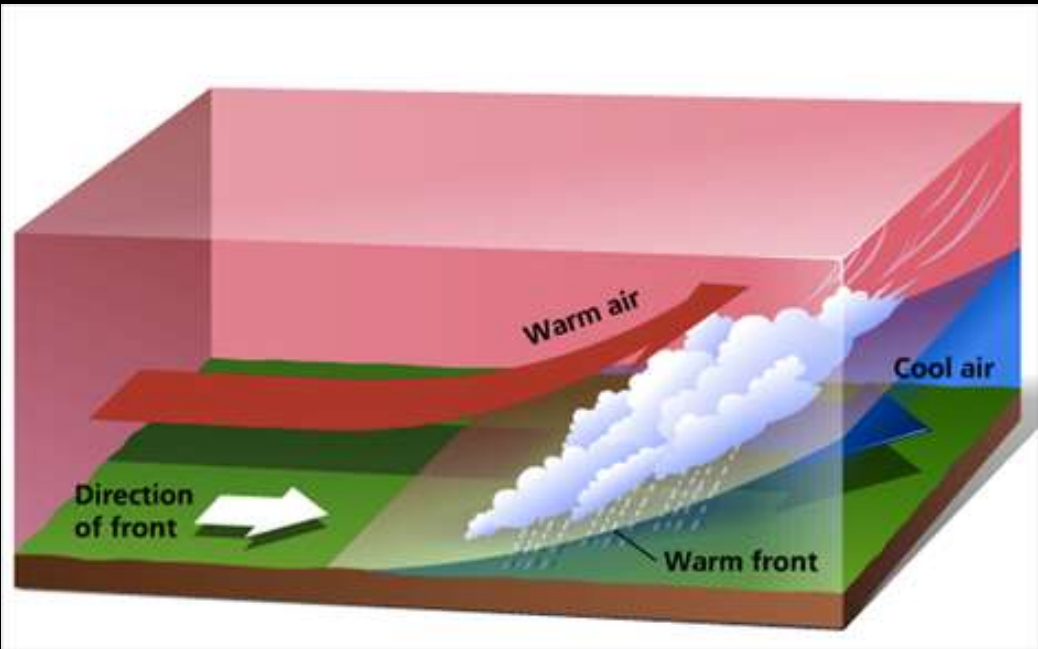
Flash Flooding Possible (hatched)
 Severe T'Storms Possible (hatched)
 Freezing Rain Possible (hatched)
 Heavy Snow Possible (hatched)

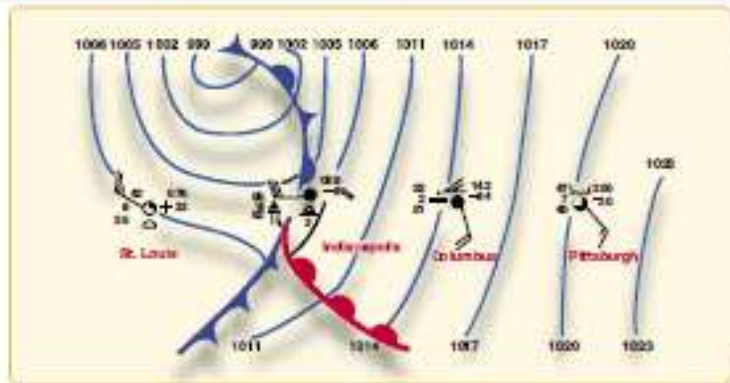
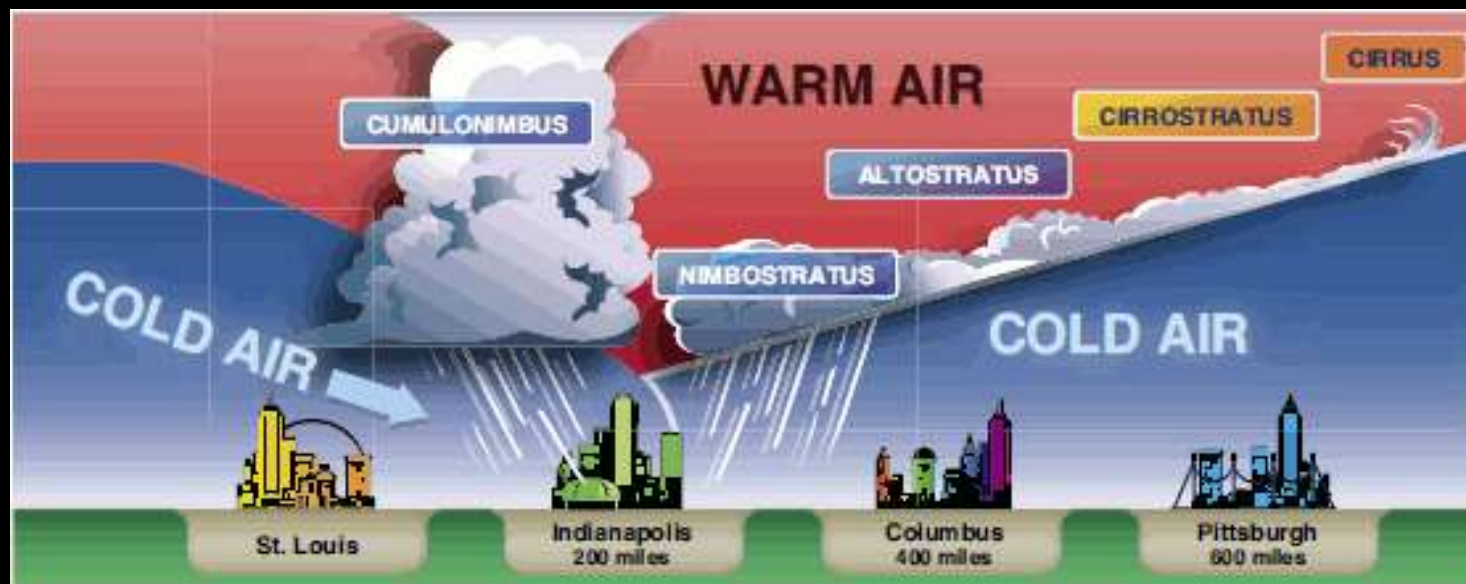




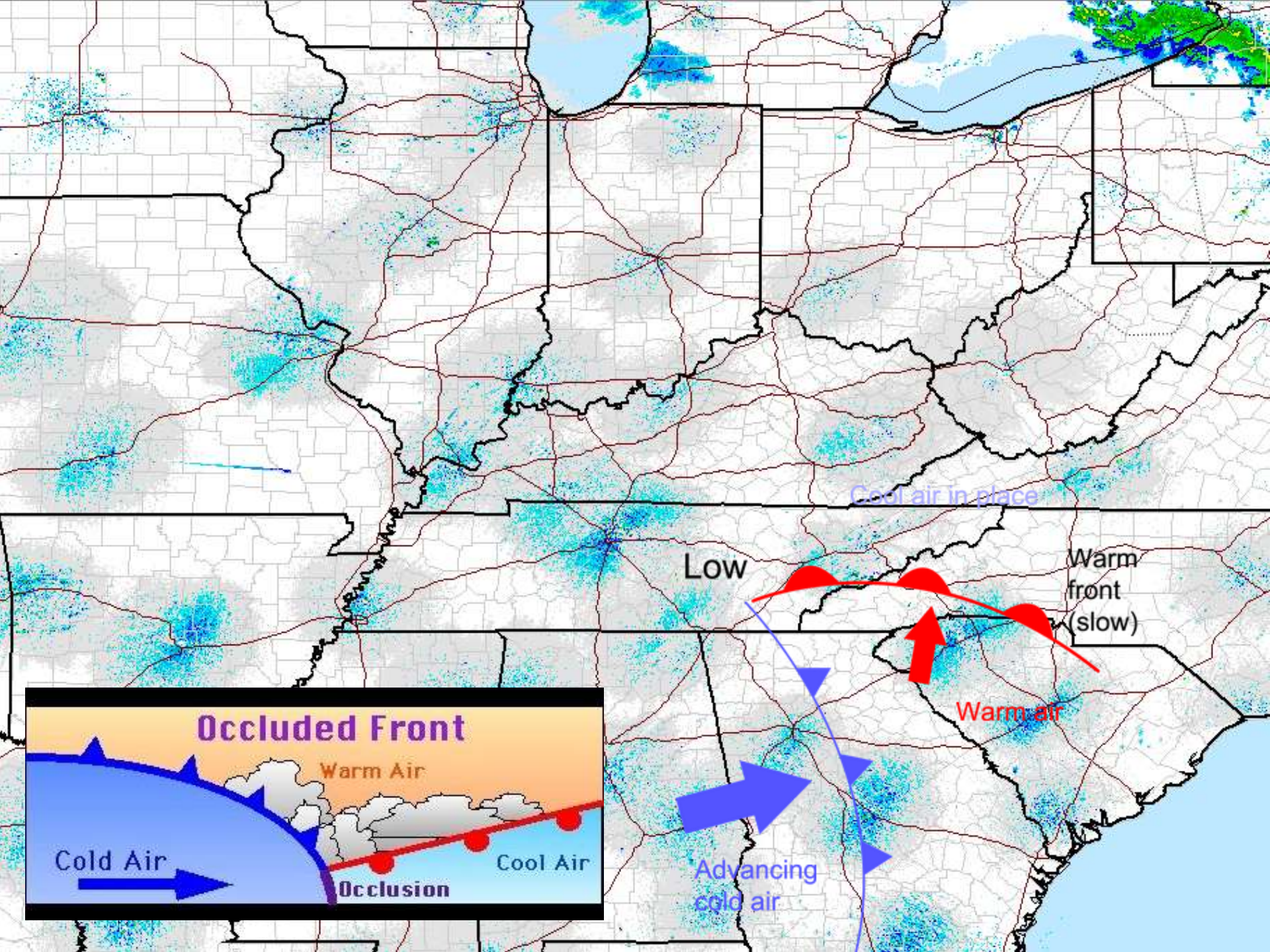
Day 1 National
 Valid Thu, Apr
 DOC/NOAA/NV
 Prepared by M

...sible (hatched)
 ...sible (hatched)
 ...ble (hatched)
 ...le (hatched)



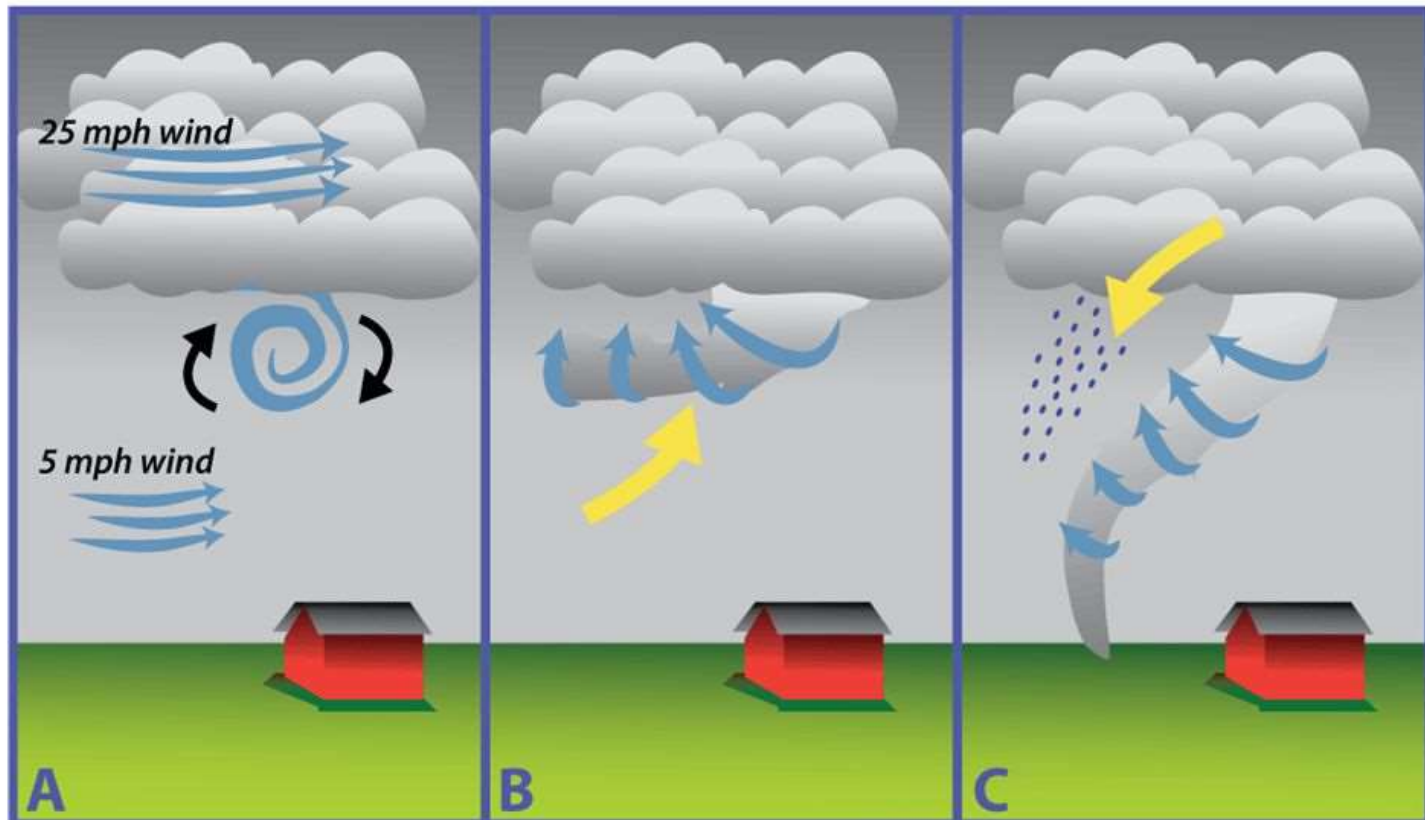


METAR	KSTL	1950Z	31023G40KT	8SM	
	SCT035		05M03	A2976	
METAR	KIND	1950Z	29028G45KT	1/2SM	TSRAGR
	VV005		18/16	A2970	
METAR	KCMH	1950Z	16017KT	2SM	BR
	OVC080		11/10	A2970	
METAR	KPIT	1950Z	13012KT	75SM	
	BKN130		08/04	A3012	



Tornados Need Wind Shear

- A strong updraft tilts the wind shear and produces rotation inside the tornado. A funnel cloud appears.



AVIATION WEATHER CENTER

NOAA NATIONAL WEATHER SERVICE

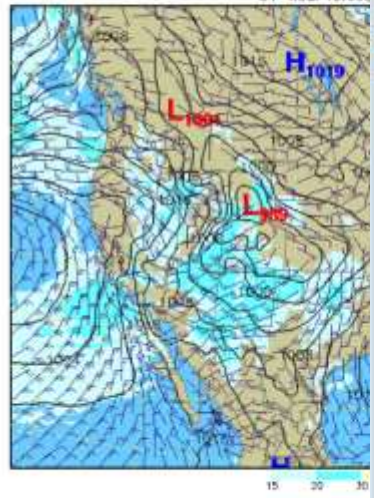
Local Forecast | HOME | ADVISORIES | FORECASTS | OBSERVATIONS | TOOLS | NEWS | SEARCH | ABOUT USER

ADDs Wind Temperature Forecast

WindTemp Home | Plot | Data

Plot: Wind Speed | Vert. level: 100 ft | Time: 18Z Thu 12 Apr

Sea-level pressure (mb) / surface wind
01-hour forecast



ADDs temp/wind charts supplement, but do not substitute in the FB product.

AVIATION WEATHER CENTER

NOAA NATIONAL WEATHER SERVICE

Local Forecast | HOME | ADVISORIES | FORECASTS | OBSERVATIONS | TOOLS | NEWS | SEARCH | ABOUT USER

ADDs Wind Temp Data

FB Wind Display at 30,000 feet valid at 1800 UTC 12 Apr 2018

Map: Light Dark Simple

Plot Options: Hover

Data Options: 30,000 ft | 6 hr Forecast

AVIATION WEATHER CENTER

NOAA NATIONAL WEATHER SERVICE

Local Forecast | HOME | ADVISORIES | FORECASTS | OBSERVATIONS | TOOLS | NEWS | SEARCH | ABOUT USER

Forecast Winds and Temps Aloft (CHI)

Low High | FB Winds Map | 0000 0005 0010 0015 0020 UTC

(Extracted from FB031: 0000 200001)
FOUO1
DATA BASED ON 230000Z
VALLZ 200400Z FOR ONE 1200-1800Z. TEMP9 000 180V 24000

FT	0000	0005	0010	0015	0020	0025	0030	0035	0040	0045	0050
BRL 0901	2610-01	2604-04	3044-10	3210-20	3290-30	321344	332254	321142			
CRG 0407	3218-04	3227-08	3136-12	3055-20	3290-32	322643	332294	310460			
DMB 1117	2610+01	2821-04	3030-08	3250-18	3270-28	313642	310034	320884			
NCW 0806	2900-04	3118-04	3130-10	3287-21	3278-30	315444	321394	323842			
RJT 0400	3114-00	3227-05	3139-14	3042-20	3272-36	330645	334254	320394			
SPI 0808	3025-03	3033-04	3080-11	3174-20	3280-31	322243	332300	320600			
STY 0109	3121-03	3030-04	3052-10	3241-24	3226-30	335443	333450	320200			
PHO 0303	3224-09	3122-13	3139-16	3180-27	3275-37	323943	328234	327151			
DNA 0211	3221-07	3130-09	3142-14	3042-20	3267-37	330347	330900	326204			
SCX 1814+14	2314-09	2724+03	2330-14	2346-25	235041	294031	294031	294483			
SLC 1827	2124+09	2432+02	2723-14	2740-20	278441	297432	299144				
LCX 0204	3218+10	3211+04	3027+00	3037-20	3140-28	312643	318422	303343			
SLR 0714	3218+10	3211+04	3024+00	3142-20	3130-28	312642	318422	303343			
LCO 0312	3220-06	3041-08	3151-12	3050-20	3240-37	335447	330350	328134			
SCN 0319	3021-11	3221-13	3120-20	3131-30	3142-42	323943	323149	314449			
MMW 0403	3423-10	3204-14	3234-18	3044-30	3270-38	323049	327301	324700			
MCT 0219	3113-12	3413-13	3420-20	3329-30	3330-41	327340	327200	328700			
SDH 0319	3329-11	3521-14	3410-20	3521-30	3420-44	334443	334349	324149			
TYC 0419	3320-11	3420-15	3324-20	3236-32	3252-41	327243	328049	326449			
ABR 0313	3004-09	3212-08	3224-12	3130-21	3271-38	330344	311300	310342			
DLR 0512	3008-10	3013-13	3224-17	3250-20	3273-37	323044	324200	318204			
ZNL 0411	0000-11	3409-13	3321-18	3233-27	3271-37	321647	324300	317000			
NEP 0711	2709-09	3017-09	3229-13	3245-23	3282-32	321343	312300	312041			
CUC 0900	2723+01	3031-02	3040-06	3130-20	3200-28	321094	321200	323842			
CUD 1700	2423+00	2820-01	3034-07	3149-19	3270-28	323543	320304	320443			
WPC 1300	2414+00	2817+02	2921-08	3140-17	3140-28	318142	318300	327044			
RPL 2304	2530+07	2820+00	3123-04	3044-10	3140-27	327442	327300	327004			
STL 1308	2528+00	2830-05	3044-09	3134-21	3200-29	321044	320404	323843			
DCX 1440+00	1731-02	2014-04	2420-17	2430-28	275944	271134	287049				
SPX 1413	1310-07	3000-09	3217-13	3043-21	3142-30	309447	311200	318742			
WST 1421-03	1313-04	2410-09	2723-20	2942-30	294446	291134	297442				

<https://www.weather.gov/owlie/>

Weather Education

Teaching and Training Resources for the Geoscience Community

What Is MetEd?

MetEd is a free collection of hundreds of training resources intended for the geoscience community. Whether you're an experienced meteorologist honing existing skills or a student looking for new geoscience topics of interest, we have something for you. Learn more about MetEd in this short [video](#).

Recent Publications

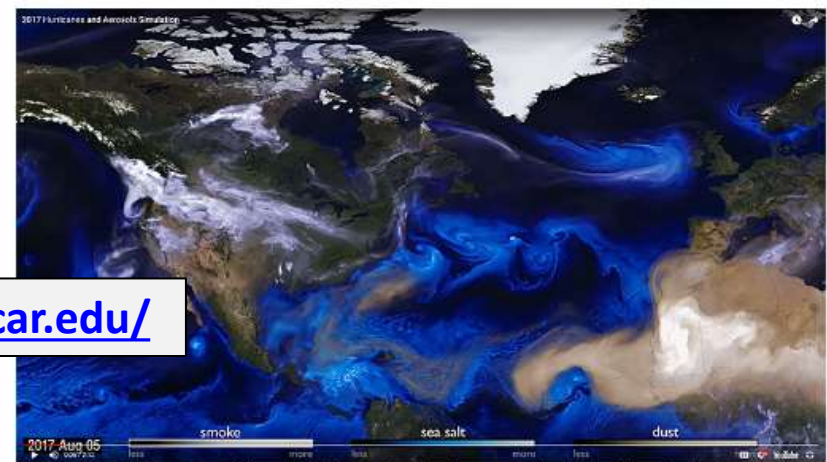
SatFC-J: CrIS and ATMS Sounders

SatFC-J: The CrIS and ATMS Sounder

This lesson introduces the capabilities of NOAA generation Infrared and microwave sounders, the Infrared Sounder (CrIS) and the Advanced Technology Microwave Sounder (ATMS). Both fly on board NPP satellite mission and constitute...

[More information](#)

<https://www.meted.ucar.edu/>



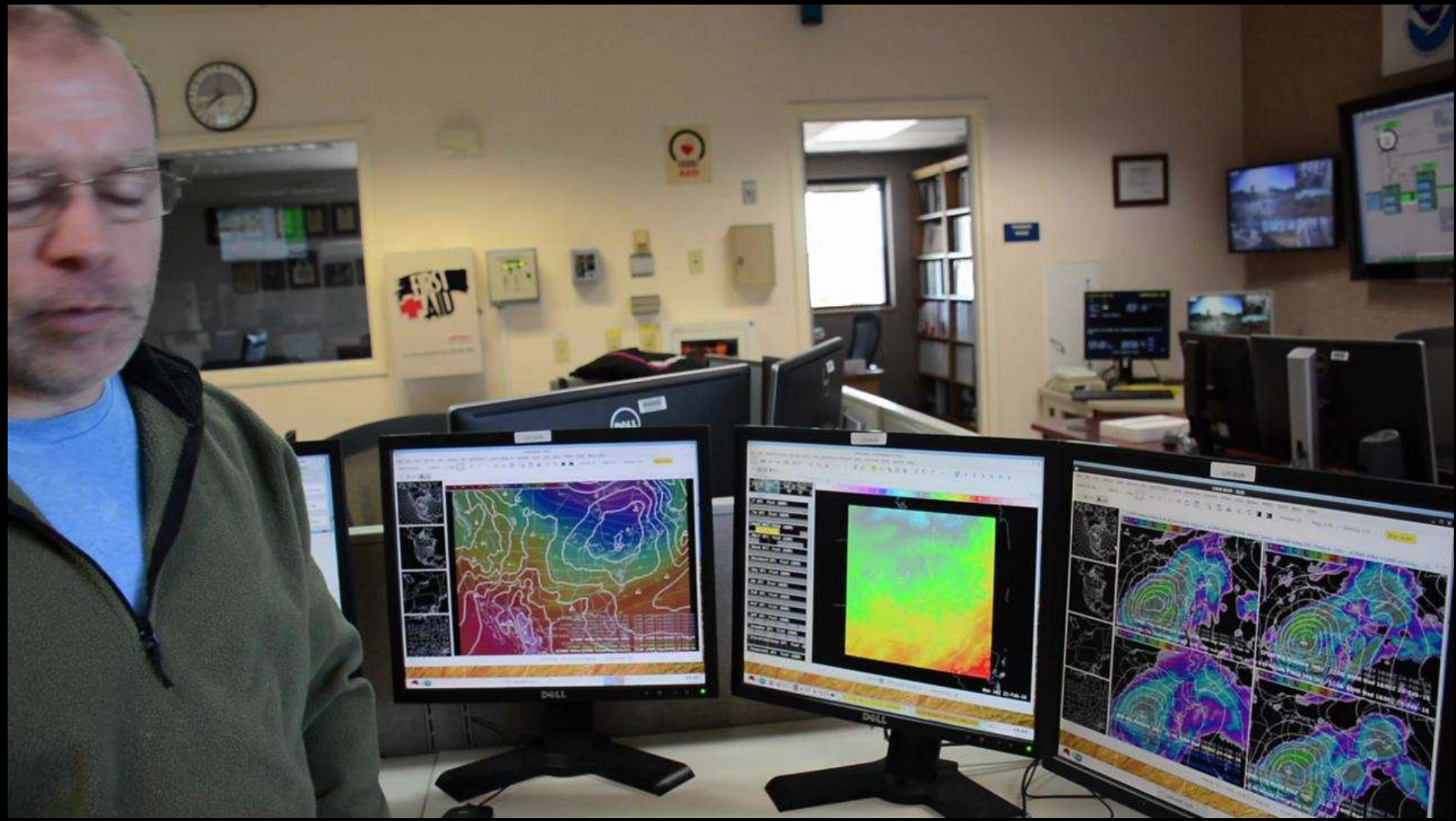
To better understand dangerous storms, NASA compiled data from several satellites into a supercomputer simulation of this past year's hurricane season. Specifically, [the featured video](#) shows how smoke (white), sea salt (blue), and dust (brown) tracked from 2017 August through October across the northern half of Earth's Western Hemisphere.

These aerosols usefully trace sometimes invisible winds. In the midst of the many mesmerizing flows, hurricanes can be seen swirling across the Atlantic Ocean on the right. Some of these hurricanes lashed islands and coastal regions in North America before dissipating in the northern Atlantic. Studying this year's weather patterns may bolster more accurate storm forecasts as soon as next year.

<https://www.weather.gov/jetstream/>

Want to learn More?

Severe Weather Net Procedures & Protocols



Skywarn Net Operation

Who,

What,

Where,

When,

& How



Who



Effective Severe Weather Nets Have Two Critical Components:

Net Control Operators:

- Experienced HAM radio communicators
- Proficient in Skywarn Net operating procedures and protocols
- Trained in weather observation and conversant with reporting criteria
- Capable of multitasking

Trained Skywarn Observers:

- Proficient HAM radio communicators with appropriate radio equipment
- Trained in weather observation and conversant with reporting criteria
- Familiar with Skywarn Net operating discipline, procedures and protocols
- Capable of safely observing, evaluating, and reporting hazardous weather



What



Improve Information on Dangerous Weather Conditions:

Enhance Human Safety:

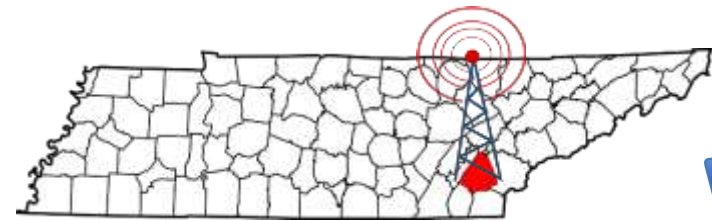
- Yours and your family's
- Your neighbors and community

Provide Improved Weather Warnings:

- To identify or verify weather dangers threatening your area
- Provide real-time information on intensity, type of danger, and storm movement

Contributes Accuracy and Clarity to NWS Data:

- Validates NWS forecasts, observation and radar data
- Contributes to greater weather phenomena formation and prediction science
- Adds important data to weather history archival data



Where



Area of Responsibility:

- Skywarn Nets are conducted for specific area locations (ours is McMinn County)
- Don't duplicate reports through other area location Nets (exception NCS to NWS)
- Understand protocols for any area shared resources (i.e., linked repeater)

Your Activity Location:

- Spotters – Wherever you are: home, work, mobile, outdoors with a radio
- Net Control – At an appropriately equipped station with solid communication
(VHF/UHF radio, computer w/Internet, phone, aux-power preferably, etc.)

The Skywarn Net Location:

- Primary Frequency – KG4FZR Athens 147.060 + pl 141
- Alternate Frequency – Starr Mountain 441.800 + pl 141
- No-Repeater Back-up - Simplex 147.060



When



Pre-Net Activation:

- DO NOT activate a “stand-by net.” (consider our shared resource)
- Repeaters continue to be in “Normal Use.”
- Operators may discuss weather related topics but relinquish to emergency traffic

Activation Threshold: - *DISCUSSION* -

- NWS issues a WARNING for your area
- A Skywarn NCS feels that weather conditions warrant activation of a Net

(No NWS issued Watch or Warning is required before activation)

Skywarn Net Activation:

- Who can activate a Net? - Any Skywarn trained HAM who is willing to accept the responsibilities of running the net may activate a Severe Weather Net.
- The Net must be conducted according to the MCARC Guidelines
- The Primary NCS is the only operator who can close the net.

How

MCARC Skywarn NCS Guidelines:

Review of the MCARC NCS Guidelines

(Refer to your Guidelines Sheet)

What should be communicated?

• Observations meeting reporting criteria:

- ✓ hail (any size)
- ✓ 58MPH or greater winds/damage
- ✓ Rainfall of 1" or more per hour
- ✓ Wall or funnel clouds (rotating)
- ✓ Tornado (on ground with debris cloud)
- ✓ Flooding

The limits of Communications:

- DISCUSSION -



MCARC Skywarn Net Control Operator Guidelines

(NOTE: This IS NOT an official Skywarn document.)



ALWAYS MAKE SURE YOU AND YOUR FAMILY REMAIN SAFE!
CONTINUALLY MONITOR FOR TRAFFIC FROM WX4MRX!

- 1) Local Skywarn nets should be activated when weather is very near or at severe warning stages. It is not a requirement that NWS has issued a "WARNING" for the area. If the NCS thinks weather is becoming severe, activate a net.
- 2) Open the nets by saying "This is <callsign> now opening the McMinn County Skywarn net".
- 3) Read any warnings you have received, and mention watches and their expiration time.
- 4) Remind Spotters of severe weather reporting criteria:
 - * hail (any size)
 - * 58MPH or greater winds/damage
 - * Rainfall of 1" or more per hour
 - * Wall or funnel clouds (rotating)
 - * Tornado (on ground with debris cloud)
 - * Flooding
- 5) Take check-ins and severe weather Spotter reports. (you are encouraged to make a log of the net)
- 6) Assign an alternate NCS station away from your area to assume NCS responsibilities should you become directly affected by severe weather or lose power or the ability to operate. If necessary due to workload, assign liaison(s) to contact WX4MRX with Spotter reports.
- 7) If the net is quiet, announce the active status of the net every 10 minutes by saying:
"This is <callsign> continuing the McMinn county Skywarn net - we remain under a (type of warning) until (time)".
- 8) Report all Spotter reports which meet reporting criteria to Morristown NWS immediately by:
 - 1) Primary - by Storm Report [web reporting form](#)
 - 2) Follow-up - WX4MRX radio (primary frequency 146.940 MHz - alternate 146.625 MHz)
 - 3) Last resort by telephone (800-697-0075). (Your AITNCS can also be assigned to do this if needed.)

NOTE: NEVER give out the 800 to MRX over the air! That number is for Skywarn spotters only.
- 9) After contacting NWS, relay the severe report via phone to local EMA or dispatch center (possibly on a non-911 number) to report the most severe reports (tornadoes, funnel clouds, floods, damage such as roofs, trees in road, etc). NOTE: Check with your local authorities to see if they want this done before doing it!
- 10) When the existing warning has expired, make a decision whether to remain in open status, depending on other weather happening around your area. If you feel the severe weather has lessened to watch levels, close the net. If conditions remain severe and/or the potential that another warning may be issued in a few minutes, you might want to keep the net open.
- 11) Always thank everyone participating when closing the net, and acknowledge scanner listeners.

McMinn County Skywarn net frequency: Primary 147.060, +, pl 141 Alt. 441.800, +, pl 141.3

MRX [Web Reporting Form](#) MRX Phone: 800-697-0075

WX4MRX Reporting Frequencies: Primary 146.940 MHz - pl 118.8 Alt. 146.625 MHz - pl 118.8
(Repeater may or may not have an active decode tone of 118.8 Hz)



MCARC Skywarn Net Control Operator Guidelines

(NOTE: This IS NOT an official Skywarn document.)



ALWAYS MAKE SURE YOU AND YOUR FAMILY REMAIN SAFE! CONTINUALLY MONITOR FOR TRAFFIC FROM WX4MRX!

- 1) Local Skywarn nets should be activated when weather is very near or at severe warning stages. It is not a requirement that NWS has issued a "WARNING" for the area. If the NCS thinks weather is becoming severe, activate a net.
- 2) Open the nets by saying "This is <callsign> now opening the McMinn County Skywarn net".
- 3) Read any warnings you have received, and mention watches and their expiration time.
- 4) Remind Spotters of severe weather reporting criteria:
 - * hail (any size) * 58MPH or greater winds/damage * Rainfall of 1" or more per hour
 - * Wall or funnel clouds (rotating) * Tornado (on ground with debris cloud) * Flooding
- 5) Take check-ins and severe weather Spotter reports. (you are encouraged to make a log of the net)
- 6) Assign an alternate NCS station away from your area to assume NCS responsibilities should you become directly affected by severe weather or lose power or the ability to operate. If necessary due to workload, assign liaison(s) to contact WX4MRX with Spotter reports.
- 7) If the net is quiet, announce the active status of the net every 10 minutes by saying:
"This is <callsign> continuing the McMinn County Skywarn net - we remain under a (type of warning) until (time)".
- 8) Report all Spotter reports which meet reporting criteria to Morristown NWS immediately by:
 - 1) Primary - by Storm Report [web reporting form](#)
 - 2) Follow-up - WX4MRX radio (primary frequency 146.940 MHz - alternate 146.625 MHz)
 - 3) Last resort by telephone (800-697-0075). (Your AltNCS can also be assigned to do this if needed.)
NOTE: NEVER give out the 800 to MRX over the air! That number is for Skywarn spotters only.
- 9) After contacting NWS, relay the severe report via phone to local EMA or dispatch center (possibly on a non-911 number) to report the most severe reports (tornadoes, funnel clouds, floods, damage such as roofs, trees in road, etc). NOTE: Check with your local authorities to see if they want this done before doing it!
- 10) When the existing warning has expired, make a decision whether to remain in open status, depending on other weather happening around your area. If you feel the severe weather has lessened to watch levels, close the net. If conditions remain severe and/or the potential that another warning may be issued in a few minutes, you might want to keep the net open.
- 11) Always thank everyone participating when closing the net, and acknowledge scanner listeners.

McMinn County Skywarn net frequency: Primary 147.060, +, pl 141 Alt. 441.800, +, pl 141.3

MRX [Web Reporting Form](#) MRX Phone: 800-697-0075

WX4MRX Reporting Frequencies: Primary 146.940 MHz - pl 118.8 Alt. 146.625 MHz - pl 118.8
(Repeater may or may not have an active decode tone of 118.8 Hz)

This East Tennessee SKYWARN net occurred on Saturday, March 17, 2018. It was on the 146.940 WB4GBI Repeater in Sevierville, TN.

The audio has been truncated to removed "dead air" periods. The recording is from approximately 6:25 PM to 10:30 PM EDT.

Our thanks to Tim Berry, WB4GBI for use of the repeater and audio recording.

Net Controls: Josh Marler, WX4KXT / Greg Williams, K4HSM / Brandon Monroe, KG4QWI.

Website: www.etskywarn.net

Twitter: @etskywarn

The logo for East Tennessee SKYWARN features the words "EAST" and "TENNESSEE" in a bold, orange, italicized sans-serif font. To the right of "EAST" is a circular emblem containing a stylized orange and white lightning bolt. The logo is positioned on the left side of a horizontal banner that has a jagged, torn-paper edge on its right side. The banner's background is a photograph of a cloudy sky.

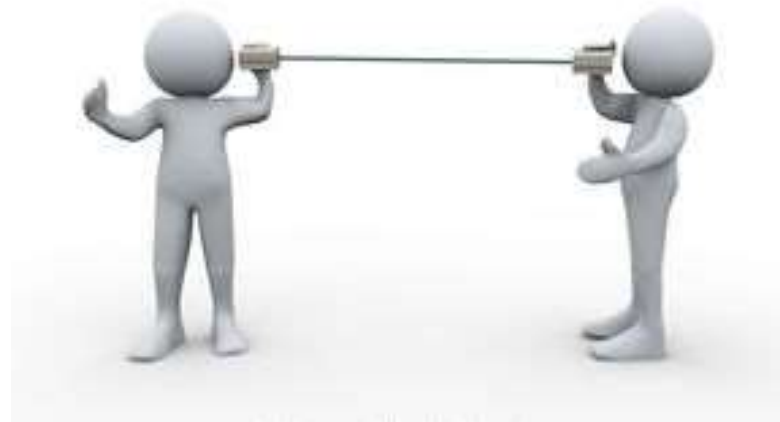
EAST 
TENNESSEE

[Link](#)

Any Questions?



Ready to give it a try?



Mock Skywarn Net Exercise